



Yi-lift Material Handling Equipment Co.,Ltd.

Your Reliable Source For Material Handling Equipments

✧ Drum Handling ✧ Mini Forklift & Tractor ✧ Forklift Attachment ✧ Crane & Jack

2020



ChangzhouYi-Lift material handling equipment co.,Ltd, is a professional logistic and industrial equipments manufacturer in China for more than 30years. The product range covers manual and electric pallet trucks, stackers, mobile and stationary lift tables, weighing trucks, roller skates and all kinds of trolleys.

Our company owned a complete line of advanced equipments, such as CMM machines, welding Robots, CNC cutting machine, Auto Power coating line, Hydraulic Press and Testing machine etc. We have professional technical team in designing and producing which can meet the different requirements from customers. And we are an ISO9000 quality certified company which ensures all products and service is complied with standard quality system. Most of our products are also granted CE or GS certificates by TÜV Rheinland Group.

We cooperated with Hu-lift since year 1992 to export our products all over the world. We acted as the original equipment manufacturer (OEM) for many worldwide enterprises such as Linde, Still, Manitou on pallet trucks, and we are also important supplier to some famous catalogue companies such as Grainger, Manutan, Kaiser+Kraft, Global, Fastenal, usco and AJ.

Yi-Lift team are always ready to provide not only quality products but also our prefect customer service, our professional work is worth to be rely on!



CONTENTS



Drum Handling

001 ~ 024



Mini Forklift & Tractor

025~ 026



Forklift Attachment

027~ 033

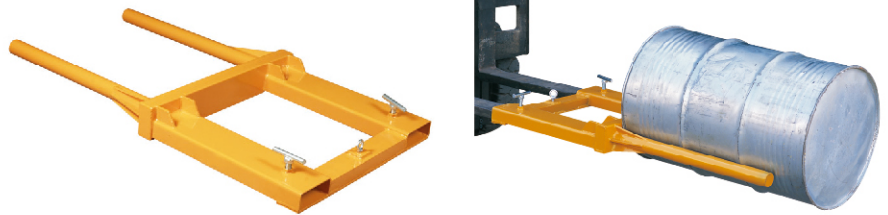


Crane & Jack

034~ 052

Drum Positioner DH300

- ♦ Steel drum 221/2" (572mm) diameter, 36" (915.5mm) high.
- ♦ Fork Opening: 241/2" (623mm) apart.
- ♦ Fork Pockets: 51/2" x 1/2" x 2" (140mm x 55mm x 560mm).



Model		DH300
Capacity	(kg)	300
Drum Size	(gallon)	55 (210 liters)
Overall Size	(mm)	1405x720x120
Net Weight	(kg)	42

Drum Lifter DL series

- ♦ For lifting 210 litre steel drum.
- ♦ Easy Moves and handles open or closed head, loaded steel drums. Allows quick, gentle loading into overpacks and keeps drums upright during lift, reducing spills and injuries.
- ♦ Works easily with overhead hoist or hook form forklift.
- ♦ All-steel construction.



DL350



DL360

Model		DL350	DL360
Capacity	(kg)	350	360
Net Weight	(kg)	9.5	4.5

Drum Lifter DL series

- ♦ All-steel construction.
 - ♦ Works easily with overhead hoist or hook form forklift.
- Model DL500A easy moves and handles open or closed head, loaded steel drums. Allows quick, gentle loading into overpacks and keeps drums upright during lift, reducing spills and injuries.
- Model DL500B easy and safely moves the drum.



DL500A



DL500B



DL500C

Model		DL500A	DL500B	DL500C
Capacity	(kg)	500	500	500
Drum		55 gallon	55 gallon	125-150L plastic drum with steel hoop
Net Weight	(kg)	5	7.5	11

Drum Tongs DM/DN series

- ♦ For lifting 210 litre drums with overhead hoist.
- ♦ All steel construction
- ♦ Manual tong Model CC-K50 suitable for open top or tight head steel drum, and plastic drums with L or XL ring.
- ♦ Semi-automatic tong model CC-K60 suitable for steel drums-open top and tight head.
To operate set locking lever in locked open position.
- ♦ When central over the horizontal. Drum release lever to allow hooks to fall and locate under both rims.
Hooks automatically engage as is lifted and disengage as drum is set down.

Model		DM500	DN500
Capacity (kg)		500	500
Drum (litre)		210	210
Net Weight (kg)		3.2	7.6



Drum Lifter Clamp DL500



- ♦ Designed for drum lifting in horizontal direction.
- ♦ 150% overload factory tested.
- ♦ Conforms to EC council directive 98/37/EC machinery,
American standard ANSI/ASME B30.

Model	Working Load Limit (kg)		Net Weight (kg)
	Single	Double	
DL500	500	1000	3.6

Drum Lifter DL500D

- ♦ This product is a professional tool used for lifting, transporting and stowing 33 gallon and 55 gallon steel or polyethylene drums open or closed;
- ♦ It is designed with a 3 point drum contact with stabilizing arm which reduces damage to the drum and automatically engages the drum rim when lowered.



DL500B



DL500B-S



DL500C



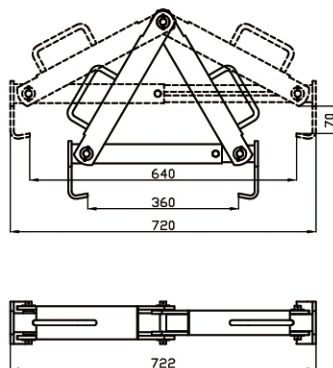
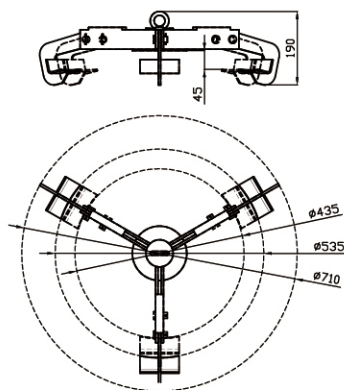
DL500D

Model		DL500D
Capacity (kg)		500
Drum Type Lifted		33gallon and 55 gallon, closed-head steel & ploy drums
Net Weight (kg)		30
Overall Dimension (mm)		H215×W711×L711



Drum Lifter DL500 series

- ♦ Lifting, moving and stowing 30 gallon and 55 gallon drums;
- ♦ Works easily with overhead hoist or hook from forklift or crane;
- ♦ Compact and heavy duty design, convenient to use.



Model		DL500A	DL500B	DL500B-S	DL500C
Load Capacity (kg)		500	500	500	500
Net Weight (kg)		6	8.8	9	3.5

Vertical Drum Lifters/Dispensers LM/LG

- ♦ One-person Operation saves time, reduces spilling waste, and improves productivity.
- ♦ Simply attach or hang lifter on hook from an overhead hoist or crane, cinch saddle around drum, and raise to desired height and position.
- ♦ Lift, transport, and pour from open and closed head drum.

LM800N

- ♦ Positive tilt lock on drum saddle to hold drum upright in transit.
- ♦ When released, the operator can manually tilt the drum to control pouring an the drum can be rotated 360° in either direction.
- ♦ Locks also hold drum in horizontal position.





Fiber drum



Special web sling as option.

LG800

- Allows remote pouring operations.
- Geared chain control and low effort feature make this model useable at any height. 10-ft control chain can be locked to secure drum in any position during transit and
- dispensing.



Fiber drum

Special web sling as option.

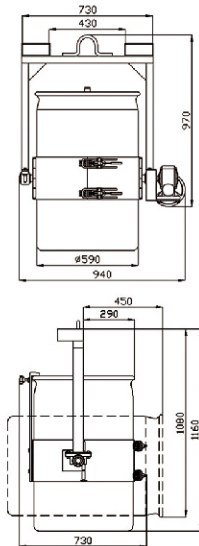
Model		LM800	LG800
Max. Weight Capacity	kg(lbs)		360(800)
Drum Type Lifted		30/55 gallon closed-head steel drum	
Net Weight	kg(lbs)	20(44)	38(84)
Overall Dimension(H×W×D)	mm(inch)	990×725×200 (39×28.5×85)	

Forklift Crane Mounted Drum Lifters LM800A/B

- Unique Eagle-grip structure, with automatic adjusting core frame, speedy and safe.
- All mechanical automatic clamping handle from one to four drums once.
- Ideal for transporting and stacking steel drums, plastic drums and fiber drums.



Rotatable



with hoop



LM800A



LM800B

Model		LM800A	LM800B
Load Capacity	(lbs)	800	800
Length	(mm)	860	970
Width	(mm)	687	940
Drum Size	(mm)	Ø572	Ø572
Net Weight	(kg)	30	44

Gator Grip Forklift Drum Grab DG720

- Fork truck mounted grab has automatic grip lock that maintains a positive grip even over rough floor surface.
- Grip will not unlock until drum is set down.
- Traditional devices can allow grips to open and drop drum.
- The gator Grip auto lock feature will not open and ensures safe secure drum transport.
- Works with steel, poly or fiber drum.



Model		DG720
Capacity	(kg)	720
Drum Size		55 gallon×2
Fork Opening	(mm)	605
Overall Size	(mm)	920×900×650
Net Weight	(kg)	72

Ali Grip Forklift Drum Grab DG series

- ♦ Carry one or two drums by the automatic grip lock, maintains a positive grip over rough floor surface.
- ♦ The gator Grip auto lock feature will not open and ensures safe secure drum transport.
- ♦ Grip head has different positions to fit different heights.
- ♦ Very safe and easy operate.

NEW



DG360A



DG720A



DG360B



DG720B



DG360C



DG720C

Model		DG360A	DG720A	DG360B	DG720B	DG360C	DG720C
Capacity	(kg)	360	360x2	600	600x2	400	400x2
Drum Size	(gallon)	55	55x2	55	55x2	55	55x2
Fork Opening	(mm)	560	605	560	605	560	605
Fork Pockets	(mm)	138x54	148x54	138x54	148x54	140x55	145x55
Overall Size	(mm)	889x710x975	1010x960x780	910x640x610	1010x960x780	710x660x730	956x1077x730
Packing Size	(mm)	910x640x610	1079x1050x975	950x710x975	1140x960x975	720x670x200	966x1087x740
Net Weight	(kg)	60	98	71	120	60	77

Drum Grab DG series

- Fork Mounted Automatically!
- Easily and quickly lift drums without hydraulic or electric connections. Simply slip onto forks and tighten hand screws. Heavy duty steel construction. Lifts, transports and deposits drums without leaving the driving position. Firm pressure is automatically applied by action of the loaded drum and will be firmly maintained in the same position until being deposited, it is then automatically released.



DG10



DG20



DG50



DG40



DG45



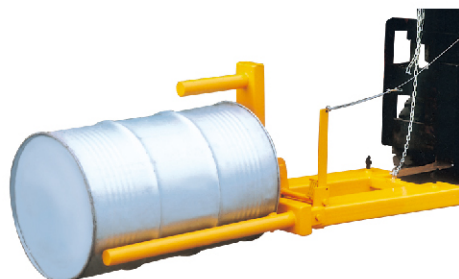
DG60



Model	Drum Type	Capacity (lbs/per drum)	Drum (gallon)	Fork Pockets (inch)	Net Weight (lbs)
DG10	Single Steel Drum	1500	55	5 1/2 x 2	121
DG20	Double Steel Drum	1500	55	7 x 2 1/4	198
DG30	Adjustable, Single Steel Drum	1500	30 or 55	5 1/2 x 2	115
DG40	Adjustable, Steel/Plastic Drum	1500	30 or 55	7 x 2 1/4	125
DG45	Adjustable, Double Steel Drum	1500	30 or 55	7 x 2 1/4	194
DG50	Adjustable, Single Poly Drum	1000	30 or 55	5 3/8 x 1 1/2	41
DG60	Adjustable, Double Poly Drum	1000	35 or 55	5 3/8 x 1 1/2	71

Drum Positioner DR400

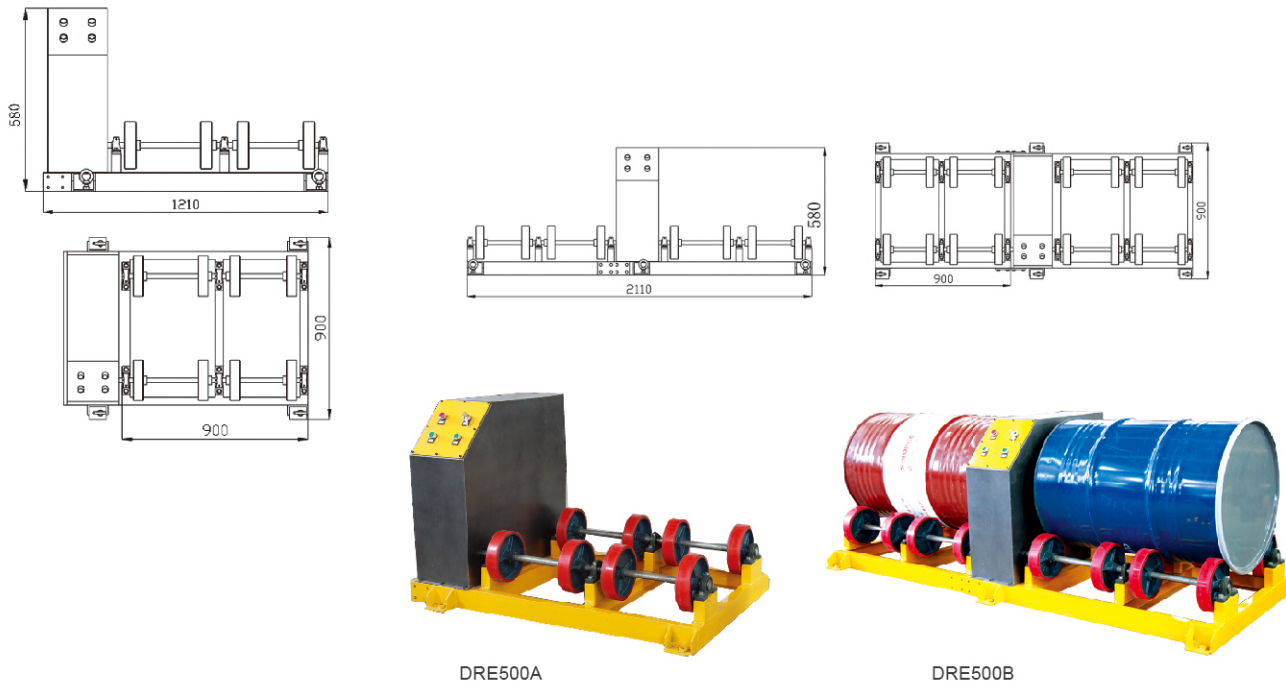
- For manipulating 210 litre steel or L and XL ring.
- Plastic drums from horizontal to vertical and vice-versa.
- Hinged tines lock automatically when lowered to ground in horizontal position.
- Ideal for loading/unloading drums stored horizontally on drum racking and stands.
- Suitable for loading drums onto vehicles.
- Completely mechanical operation.
- Can be operated without the driver leaving the seat of the truck.
- Easy-to-learn operating technique, written instructions provided.



Model	DR400
Capacity (kg)	400
Max. Fork WxD (mm)	140x50
Fork Spread (mm)	575
Overall Size (mm)	1900x690x655
Net Weight (kg)	75

Stationary Drum Rotators DRE series

- ♦ Designed for rolling One/Two drum.
- ♦ Saves time, labor and money.
- ♦ Rotating drums to mix or blend material inside a closed drum.
- ♦ Drum rotating mixes drum contents to ensure homogeneity with fewer hazards.



Model		DRE500A	DRE500B
Load Capacity	(kg)	500	500×2
Turning Speed	(rpm)	3	3
Acceptable Drum Type		55 gallon steel drum	55 gallon steel drum
Net Weight	(kg)	139	206

Hydraulic Drum Truck HJ365

- ♦ One person operate easily.
- ♦ Only for carrying and moving, not for tilting.
- ♦ Lifting after grabbing firmly when operating.

Model		HJ365
Capacity	(kg/lbs)	365/800
Acceptable Drum Style		55 gallon, Steel
Max. Height of Arm	(mm)	390
Min. Height of Arm	(mm)	270
Radius of Arm	(mm)	290
Oversize	LxW (mm)	1022×722
Net Weight	(kg)	53



Low Profile Drum Caddy DC500

- Easily transport 30 or 55 gallon steel, plastic or fiber drums.
- Removable handle is used to tilt drum for position on dolly and feature a built in seal remover.

NEW



Model		DC500
Capacity	(kg/lbs)	500/1100
Drum Size	(gallon)	30/55
Overall Size	(mm)	950×570×750
Net Weight	(kg)	17
Wheel (Poly)	DxW (mm)	150×50, 75×32

Drum Palletizer DJ365

- Moves and transports drums easily to or from pallets.
- Dual ratchet stops hold the weight of the drum, and provide several positions where the handle stays until operator holds no weight and does not need to balance drum truck.

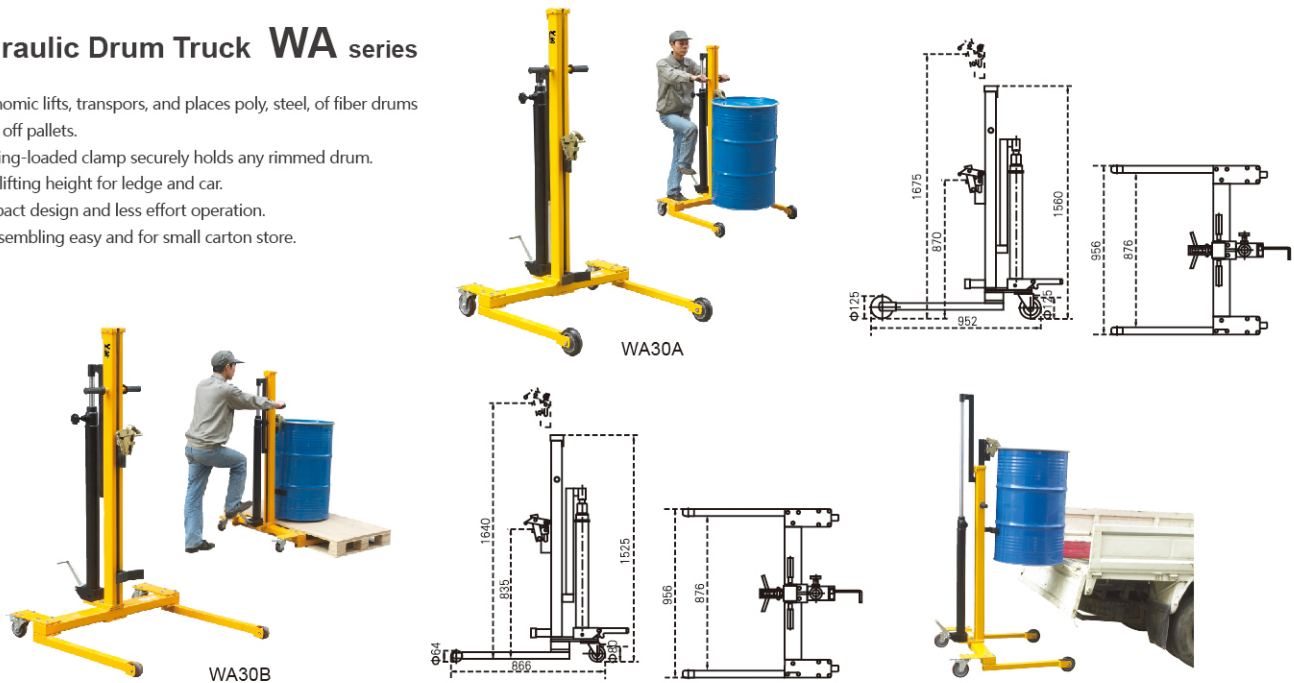
NEW



Model		DJ365
Capacity	(kg/lbs)	365/800
Drum Size		55 gallon, Steel
Overall Size	(mm)	1160×1220×800
Net Weight	(kg)	85
Wheel (Poly)	DxW (mm)	D150×50, D100×32

Hydraulic Drum Truck WA series

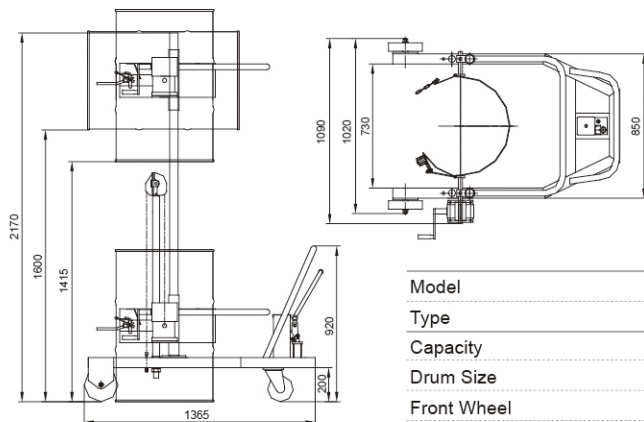
- Ergonomic lifts, transpors, and places poly, steel, of fiber drums on or off pallets.
- A spring-loaded clamp securely holds any rimmed drum.
- High lifting height for ledge and car.
- Compact design and less effort operation.
- Disassembling easy and for small carton store.



Model	WA30A	WA30B (Low Profile)
Lifting Capacity (kg)	300	300
Drum Size	572mm (22.5" Diameter), 210Liters (55 gallon)	572mm (22.5" Diameter), 210Liters (55 gallon)
Front Wheel Dia.x Wid (mm)	Ø125×32	Ø64×37
Rear Castor Dia.x Wid (mm)	Ø125×32	Ø80×32
Dimensions	H1 (mm)	835
	H2 (mm)	1640
Overall Dimensions LxWxH (mm)	952×956×1560	866×956×1525
Net Weight (kg)	72	68

Drum Lifting And Tilting Unit WB/WE series

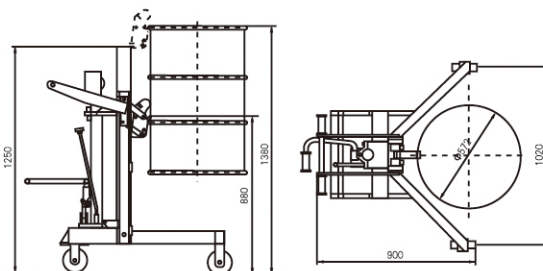
- For lifting, turning, mixing, emptying and transporting drums.
- Hydraulic cylinder with pipe breakage protection. Hydraulic lifting with pedal.
- Drums are turned with hand crank. 2 castors, 1 swivel castor with wheel stop, solid rubber wheels.
- For 200 litre steel drums with rolling hoops.
- For plastic and steel drums.



Model	WB30	WE30
Type	Manual	Electric
Capacity (kg)	300	300
Drum Size (mm)	Ø572×900	Ø572×900
Front Wheel (mm)	Ø200	Ø200
Rear Wheel (mm)	Ø150	Ø150
Strokes to Maximum Lifting Height Approx	82	—
Lifting Speed Approx (mm/s)	—	40
Power Unit (KW)	—	150
Battery (V/Ah)	—	12/60

Raptor Drum Load/Unloader DTF series

- Easily glides over pallet to quickly load or unload 30 or 55-gallon drums, Grabs drums from the middle of a standard pallet with a drum clawgrab, raises the drums up, and redistributes them throughout the facility.
- Also removes drums from the corner of containment skids, Highly maneuverable unit features a unique two poly wheel and two poly caster.
- Both steel drum and plastic drum.



DTF450



DTF450A



DTF450C

Scale is optional
for all truck

Model		DTF450	DTF450A	DTF450C
Lifting Capacity	(kg)	450	450	450
Lifting Height	(mm)	500	600	1100
Max. Width	(mm)	1020	880	1150
Drum Size		210L (55 gallon), Dia. 572mm (22.5")		
Net Weight	(kg)	145	125	155

Hydraulic Drum Truck DTW250

Straddle leg

- Ideal for lifting and transporting steel drums with a top lip.
- Straddle leg for picking up drum from a Euro Pallet.
- Spring-loaded steel jaws securely grip the top lip of the drum.
- Simple design is easy to use; unit features a manual mechanical hand ratchet crank lift mechanism.
- Includes two rigid and one locking swivel caster.



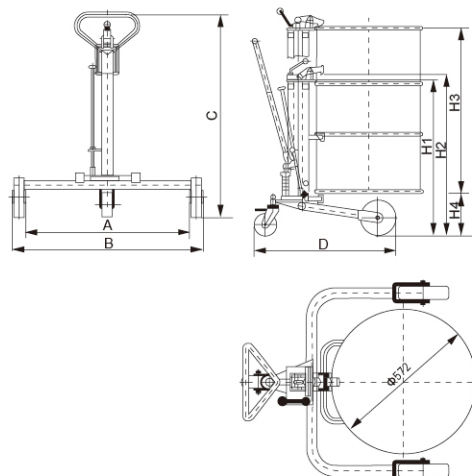
DT250



DTR250



DTW250



Model		DT250	DTR250	DTW250
Lifting Capacity (kg/lbs)		250/550	250/550	250/550
Lifting Height (mm/inch)		345/13.58"	1180/46.4"	345/13.58"
Lifting Per Stroke (mm/inch)		22/0.87"	22/0.87"	22/0.87"
Drum Size		572mm (22.5"Diameter), 210Liters (55 gallon)		
Dimension	A (mm)	670	850	850
	B (mm)	800	950	1015
	C (mm)	1050	1050	1050
	D (mm)	820	812	820
	H1 (mm)	875	880	875
	H2 (mm)	908	910	905
	H3 (mm)	900	900	900
	H4 (mm)	320	380	320
Net Weight (kg/lbs)		42/93	50/110	45/99

Hydraulic Drum Truck DT series



DT360A



DT360B



DT350C



DT400C



Model		DT360A	DT360B	DT350C	DT400C
Capacity	(kg)	350	350	350	400
Lifting Height	(mm)	300	300	300	300
Max. Width	(mm)	920	1260	1400	Adjustable, Max. 1550
PU Wheel	Front/Rear (mm)	Ø150×50/Ø125×50	Ø150×50/Ø125×50	Ø150×50/Ø125×50	Ø200×50/Ø200×50
Net Weight	(kg)	50	50	55	109

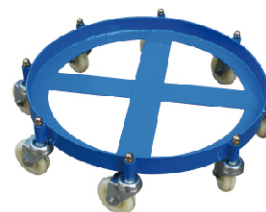
Drum Dollies SD series

NEW

- ♦ Smooth rolling, strong and durable dollies easily transport 30 or 55 gallon drums.
- ♦ Zinc plated nuts and bolts.
- ♦ SD3-5 & SD15-P: plastic drum dolly.



SD55-T



SD55-O



SD3-5



SD55-H

Model		SD3-5	SD55-O	SD55-H	SD55-T
Dolly Capacity	(kg)	410	900	410	410
Drum Size		30/55	55	55	55
Inside Diameter	(mm)	480/595	615	612	612
Net Weight	(kg)	6.2	15	17	12

Drum Truck DE450

- One person operate Easily.
- Self-standing with kickstand.
- 10 rubber wheel let you operate with less effort.
- Safely carry and grip the drum. and one locking swivel caster.



DE450B



DE450

Model		DE450	DE450B
Capacity	(kg)	450	350
Drum Size		30 or 55 gallon	Ø450-Ø600
Overall Size	(mm)	1520×620×1500	1520×620×1500
Net Weight	(kg)	28	31
Wheel (Poly)	(mm)	250×50	250×50

Drum Cradles DF10

- One man operation to lift drum for dispensing.
- Loading handle available to aid drum tipping.
- Polyester webbing strap available to securely clamp drum to stand when loading / unloading and transporting.
- Hook on drip tray available.

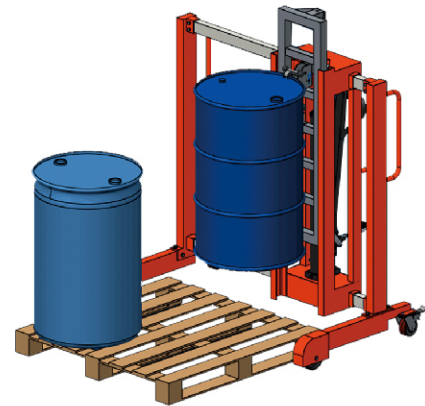
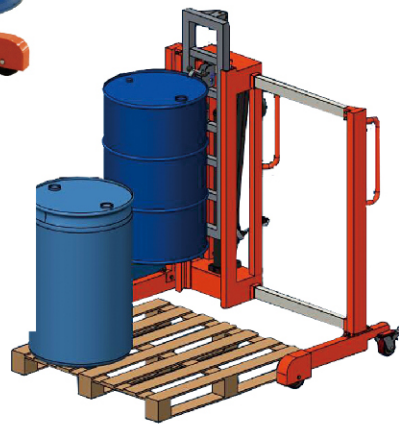
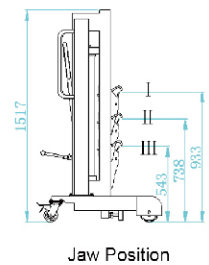
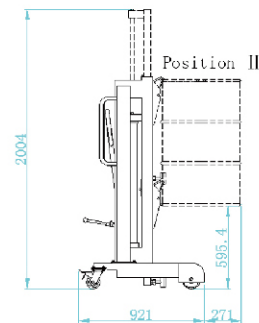
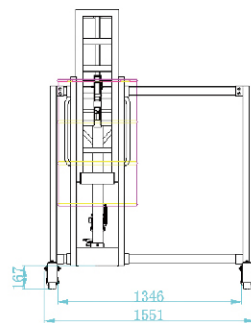


Model		DF10
Drum Type		210 litre steel
Front Wheel	(mm)	Ø125×35
Rear Castor	(mm)	Ø100×35
Net Weight	(kg)	14.5

Side Shift Drum Lifter SSDL400

- Handle drums on & off pallets or bunds from any position.
- Easy to shift and lift drum.
- Drum can be stored against a wall.

NEW



Model		SSDL400
Capacity	(kg)	400/880
Mast Shift Range	(mm)	800
Drum Type		Steel/Plastic
Drum Size	(gallon)	55/85
Min. Jaw Height	(mm)	543/738/933
Extended Mast Height	(mm)	2004
Overall Length	(mm)	921
Overall Width	(mm)	1551
Overall Height	(mm)	1517

Forklift-Karrier HK series

- Converts your fork truck into a drum handler !
- HK series Forklift-Karrier can easily lift, transport, raise and tilt loaded drums.
- The 10' pull-chain loop allows control from the driver's seat.
- It has 30:1 ratio.



Model		HK285A	HK285B
Capacity	(kg/lbs)	364/800, Steel Drum	680/1500, Steel Drum
Drum Size		210 Liters (55 gallon), 572mm (22.5") Diameter	210 Liters (55 gallon), 572mm (22.5") Diameter
Fork Operating		24-2/5" (620mm) apart	24-2/5" (620mm) apart
Fork Pocket		2-1/2" high×7" wide (65×180mm)	2-1/2" high×7" wide (65×180mm)
Net Weight	(kg/lbs)	70/154	79/214

Mobile Maintenance Platform NK28

- High quality power pack unit provides a steadily lifting;
 - Conforms to Health and safety Guidance PM28 and GN28 standard;
 - Standard: 12VDC-120Ah Battery VARTA also un be to forklift power;
 - Optional: Ac power
 - Anti-exploded valve m prevent rapidly lowering;
 - Applicable to use on [he ground, and ensure [he supporting leg is fixed on the ground;
 - Can be easily work with 2T or more forklift;
 - The connections with forklift are with triple insurance:
 - A: Two bolts to fix;
 - B: Two chain to buckle;
 - C: Four fixed T bolt onto forklift to ensure a high safety & reliability.
 - Regular to check those rotating parts, and be propedy lubricated.
- Suitable for hand push on the ground,
and also can be easily work with 3T or more forklift.



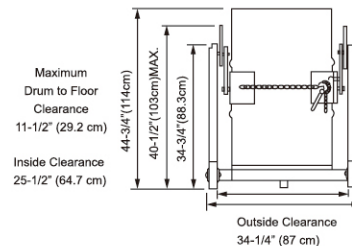
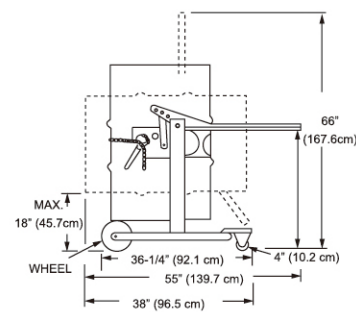
Model		NK28
Capacity	kg	280
Lifting height	mm	3180
Deck size	mm	1000×800
Power pack	V	12
Battery	V/Ah	12/120
Net weight	kg	490
Overall size	mm	2200×2060×1020
Wheel size	mm	Nylon Φ150×150

Mobile-Karrier HD series

A truly quality-built drum handler.

Remarkable versatility ! Mobile-karrier raises, transports, rotates, tilts and drains fully loaded drums. It carries the full weight of the drum.

Dual, fingertip operated locks secure the raised drum. It can lock a drum in vertical positioning to avoid spills or horizontal position for draining through a faucet. When unlocked, the drum may be tuened end-over-end to agitate contents or tipped and held manually at any angle. And it is very simple to move and steer on its 8" nylon or polyurethane roller bearing wheels and 4" swivel caster. A truly quality-built drum handler. it is shipped partly disassembled to save freight costs.



HD80A



HD80B



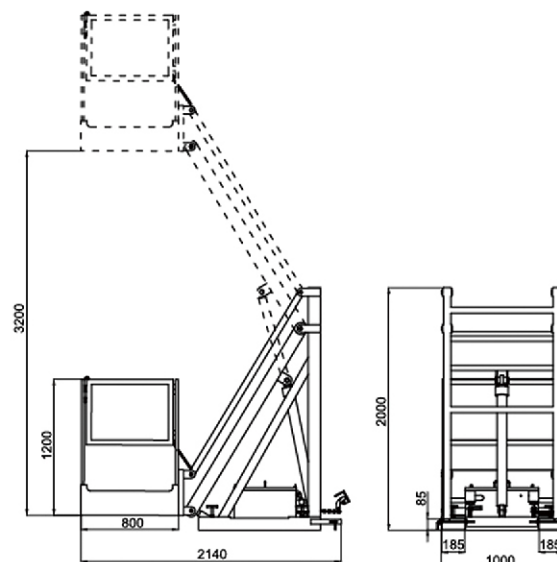
Model		HD80A	HD80B	HD80C
Capacity (kg)		364, Steel Drum	365	365
Drum Size		572mm (22.5") Diameter, 210 Liters (55 gallon), 36" High (915.5mm)	30-55gallon (Ø450×700~572×900) Steel drum 30-50gallon/210L plastic drum	
Net Weight (kg)		50	52	58

Note:Stainless steel type is available



Fork Mounted Maintenance Platform NK28A

- ♦ High quality power pack unit provides a steadily lifting;
 - ♦ Conforms to Health and safety Guidance PM28 and GN28 standard;
 - ♦ Standard 12VDC-120Ah Battery VARTA also can be to forklift power;
 - ♦ Optional: Ac power
 - ♦ Anti exploded valve to prevent rapidly lowering;
 - ♦ Can be easily work with 2T or more forklift;
 - ♦ The connections with forklift arm with triple insurance:
 - A: Two bolts to fix;
 - B: two chain to buckle;
 - C: Four fixed T bolt onto forklift to ensure a high safety & reliability
 - ♦ Regular to check those rotating pads, and be properly lubricated
- Can be easily work with 3T or more forklift.**



Model		NK28A
Capacity	kg	280
Lifting height	mm	3180
Deck size	mm	1000×800
Power pack	V	12
Battery	V/Ah	12/120
Net weight	kg	426
Overall size	mm	2140×1000×2000

Fold-down Cylinder Hand Truck TY series

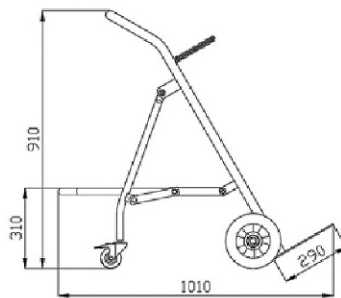
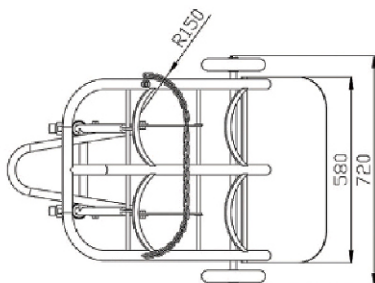
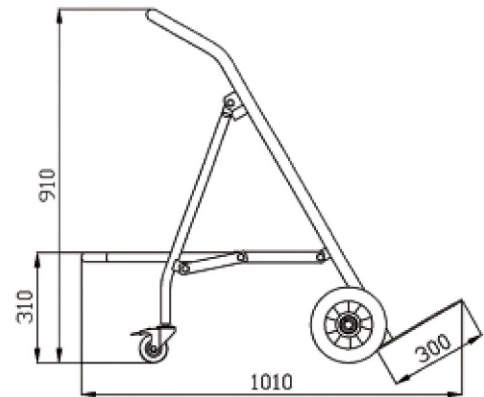
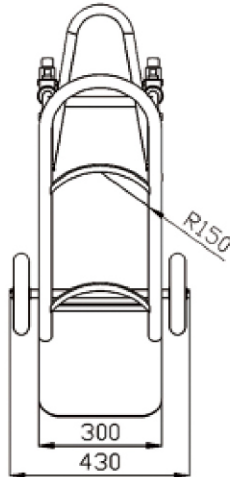
- ♦ Designed to transport oxygen cylinder and acetylene cylinder with ease.
- ♦ Easy fold-down for storage.
- ♦ All steel metal construction. (stainless is available).
- ♦ Solid rubber wheels are with wear-resisting usage.



TY120



TY120A



TY120



TY200A

Model		TY120	TY200	TY120A	TY120B	TY200A	TY200B
		Single Cylinder	Double Cylinder	Single Cylinder	Single Cylinder	Double Cylinder	Double Cylinder
Material		Carbon Steel		210SS	304SS	210SS	304SS
Capacity	kg(lbs)	120(264)	200(440)	120(264)			
Cylinder Diameter	mm(inch)	Ø140-300(5.5-12)					
Wheel(Rubber)	mm(inch)	Ø200×40(8×1.5)					
Castor	mm(inch)	Ø75×30(3×1.1)					
Net Weight	kg(lbs)	18(39.6)	25(55)	18(39.6)	15(33)	20(44)	20(44)



Fold-down Stainless Steel Cylinder Hand Truck

- ♦ Designed to transport oxygen cylinder and acetylene cylinder with ease;
- ♦ Easy fold-down for storage;
- ♦ All steel metal construction;
- ♦ Solid rubber wheels are with wear-resising usage



TY120A/B



TY120A/B



TY120A/B



TY130A/B



TY130A/B

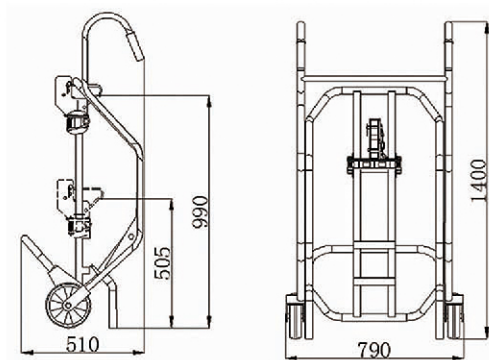


TY130A/B

Model		TY120A	TY120B	TY130A	TY120A
Type		Single Cylinder	Single Cylinder	Single Cylinder	Single Cylinder
Material	kg	210SS	304SS	210SS	304SS
Capacity	mm	120	120	200	200
Cylinder Diameter	mm	Ø140-300	Ø140-300	Ø140-300	Ø140-300
Solid Rubber Wheel	kg	Front Ø200×40 RearØ75×30	Front Ø200×40 RearØ75×30	Front Ø200×40 RearØ75×30	Front Ø200×40 RearØ75×30
Net Weight		15	15	21.5	21.5

Drum Truck DE series

- Level Principle.
- Adjustable clip suitable for different drums.



Model	DE500	DE500A	DE500B
Material	Galvanized	SUS201	SUS304
Capacity (kg)	500	500	500
Net Weight (kg)	27.6	25.3	25.3
Wheel Size (mm)	Nylon Ø200x50	Nylon Ø200x50	Nylon Ø200x50

Drum Stacker DA40A/B

- Easy to lift, transport and tilt 55 gallon drum.
- Available to carry the drum to rack (lower than 1350mm).
- Tilt the drum 120° for oil empty.
- Compact and reliable mechanism system to fix drum.
- It can lock a drum in vertical position to avoid spills or horizontal.
- Position for draining through a faucet.
- Easily lift with pedal when unload.



DA40A



DA40B

Model	DA40A	DA40B
Capacity (kg)	400	400
Drum Size	572mm (22.5" Diameter), 210Lifters (55 gallon)	
Lifting Height (mm)	1350	1350
Rear Castor DxW (mm)	Ø180×50	Ø180×50
Net Weight (kg)	190	190

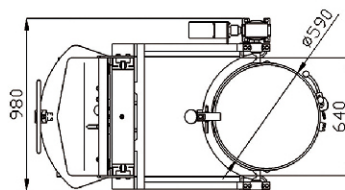
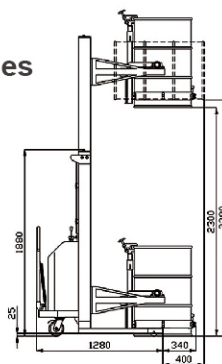


Semi-electric Drum Stacker DA450E series

- ♦ Combined Eagle-grip structure and Anchorear structure together.
- ♦ Suitable for 55 gallon steel drums & 210L rimmed plastic drums.
- ♦ Rotate drums 180 degree by motor, and can keep drums at any angle.



DA450E-1



DA450E-1

Model		DA450E	DA450E-1	DA450E-2
Load Capacity	(kg)		450	
Lifting Height	(mm)		1450/2300	
Pump			DC 12V/1.5kw	
Battery	(Ah/V)		120/12	
Wheel	(mm)		Ø80×55/Ø150×50	
Remarks		Only lift	Lift+rotate	Lift+rotate, with scale

Full Electric Drum Stacker FDS600 series



FDS600



FDS600A



FDS600B

Model		FDS600	FDS600A	FDS600B
Capacity	(kg)		600	
Lifting Height	(mm)		2400/3000	
Turing Radius	(mm)		1840	
Gradeability (Load/Unload)	(%)		3%/5%	
Driving Motor	(V/kw)		24/1.2	
Lifting Motor	(V/kw)		24/1.2	
Driving Wheel			PU, Ø250×80	
Real and Front Wheel			PU, Ø150×70/Ø78×70	
Battery	(Ah/V)		210/24	
Battery Charger	(A/V)		30/24	
Rotate		n/a	Hydraulic clamp, Hydraulic rotate	Electric rotate
Weight		640	890	680
Dimension	(mm)	2050×980×1870	2050×1180×1870	2050×1030×1870
Handrail and Pedal		Optional	Optional	Optional
Remark		only lift	Lift and rotate (max.135°)	Lift and rotate (max.360°)

Counterbalance Electric Drum Stacker CES420 series



CES420



CES420A

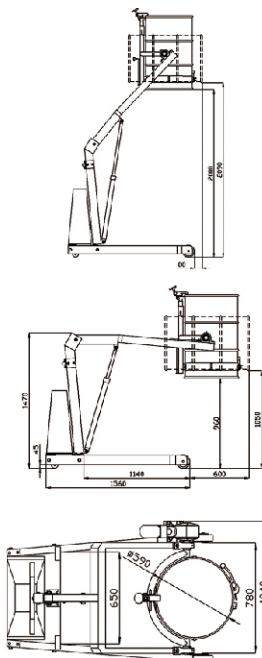


CES420B

Model	CES420	CES420A	CES420B
Capacity (kg)		420	
Lifting Height (mm)		2400/3000	
Turning Radius (mm)		2150	
Gradeability (Load/Unload) (%)		3%/5%	
Driving Motor (V/kw)		24/1.2	
Lifting Motor (V/kw)		24/1.2	
Driving Wheel		PU, Ø250×80	
Battery (Ah/V)		210/24	
Battery Charger (A/V)		30/24	
Rotate	Electric clamp, Electric rotate	Manual clamp, Electric rotate	N/A
Weight	1100	1000	990
Dimension (mm)	2030×980×1860	2050×1180×1860	2050×1030×1860
Handrail and Pedal	Optional	Optional	Optional
Remark	Lift and rotate (max.135°)	Lift and rotate (max.360°)	only lift

Electric Drum Dumpers YL300

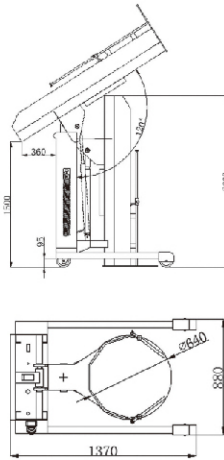
- With high quality hydraulic pump station and VARTA maintenance-free battery.
- Electric lift and electric rotation.
- Provide controlled dispensing of your drum.
- Lift, move, stack, tilt & drain your 55-gallon steel drum & 210L plastic drum.



Model	YL300
Load Capacity (kg)	300
Wheel Size (mm)	Ø150×50 (Front)/Ø100×50 (Rear)
Inside/Outside Width of Support Leg (mm)	800 (inside)/930 (outside)
Turning Radius (mm)	1750
Pump Power (Kw/h)	0.8
Battery (V/Ah)	12/100
Lifting Height (mm)	2000 (upright drum)/2090 (horizontal drum)
Lifting Speed (mm/s)	120
Acceptable Drum Size (mm)	Ø570-600
Overall Size (mm)	1560×1040×1470
Net Weight (kg)	220

Electric Drum Lifter Rotator YL400

- ♦ 45° degree tilt angle.
- ♦ Rotary switch control to power chute up.
- ♦ Gravity down system with adjustable flow control to safely lower chute.
- ♦ Heavy-gauge carbon steel construction with enamel finish.
- ♦ Adopt integrated hydraulic pump stations and high quality hydraulic oil cylinder.
- ♦ Equipped VARTA maintenance-free battery.
- ♦ Optional AC power.
- ♦ Suitable for dumping all kinds of drums.
- ♦ Portable units have two rigid and two swivel casters with floor lock screws.
- ♦ Adjustable hold-downs keep container from shifting.



Model		YL400
Rated Load Capacity	(kg)	400
Dumping Height	(mm)	1500
Turning Radius	(mm)	1600
Wheel Dimension	(mm)	Ø200×50/Ø150×50
Wheel Material		polyurethane
Pump Station Power	(kw/h)	1.5
Battery Data	(V/Ah)	12/120
Net Weight	(kg)	302
Rotating Angle	(°)	120

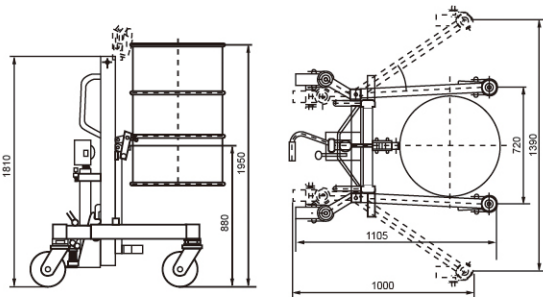
Ergonomic Drum Lift Truck DT400

Heavy-Duty

- ♦ Ergonomic lifts, transport, and places poly, steel, or fiber drums on or off pallets.
- ♦ A spring-load clamp securely holds any rimmed drum.
- ♦ It has swivel steering wheels for easy positioning and precision roller bearing load wheels for maximum stability.
- ♦ Legs adjust for different pallet, Handles 55-, 85-gallon drums.



DT400
Adjustable Leg



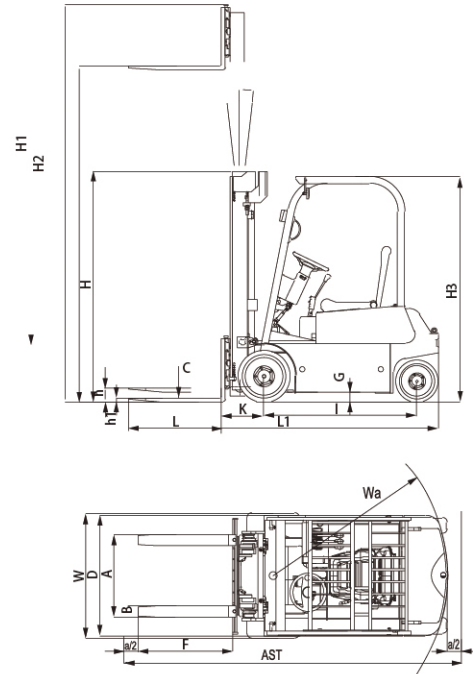
DT400A
With scale as optional



Model		DT400	DT400A
Lifting Capacity	(kg)	400	400
Lifting Height	(mm)	1100	1500
Max. Width	(mm)	1380	900
Drum Size		210L (55 gallon), Dia. 572mm (22.5")	
Net Weight	(kg)	100	135

Mini Electric Forklift CPDM series

- DC24V, Curtis SEM control system.
- Compact design for using in narrow area.
- Three wheels for easy maneuverability.
- Max. capacity: 1000kg.



Model		CPDM05	CPDM75	CPDM100
Capacity	(Kg)	500	750	1000
Load Center	C (mm)	400	400	400
Lifting Height	H2 (mm)	3200	3200	3200
Free Lifting Height	h (mm)	1600	1600	1600
Tilting Angle	Y1/Y2 (°)	2°/5°	2°/5°	2°/5°
Fork Length	L (mm)	800	800	800
Fork Width	B (mm)	100	100	100
Fork Width	A (mm)	220-680 (adjustable)	220-680 (adjustable)	220-680 (adjustable)
Side Shift	a/2 (mm)	left/right 100	left/right 100	left/right 100
Min. Turning Radius	Wa (mm)	1100	1260	1350
Lifting Speed	(m/min)	84/127	84/127	84/127
Lowering Speed	(m/min)	adjustable	adjustable	adjustable
Mast Height	H (mm)	1900	1900	1900
Max. Lifting Height	H1 (mm)	3600	3600	3600
Safe Guard Height	H3 (mm)	1900	1900	1900
Wheelbase	(mm)	860-940	860-940	860-940
Distance Front Between Wheels	(mm)	660	660	660
Min. Clearance to the Ground	G (mm)	85	90	90
Travelling Speed (with/without load)	(m/min)	6.5/7.8	6.5/7.3	6.5/7.0
Gradeability	(°)	8	8	8
Battery	(Ah/V)	210/24	280/24	385/24
AST	(mm)	2365	2365	2365
Driving Motor	(KW)	2.0	2.0	2.0
Pump Motor	(KW)	2.8	2.8	2.8
Wheel		Solid Rubber	Solid Rubber	Solid Rubber
Front Wheel		Ø267×127	Ø267×127	Ø267×127
Rear Wheel		Ø267×127	Ø267×127	Ø267×127
Overall Size	L1×W×H (mm)	1260×820×2100	1260×820×2100	1260×900×2100
Net Weight	(Kg)	1250	1380	1550

1000mm Fork is available.

Electric Tow Tractor QDS/QDF series

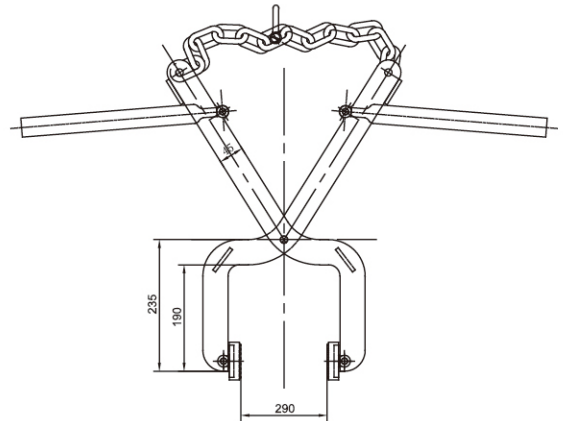
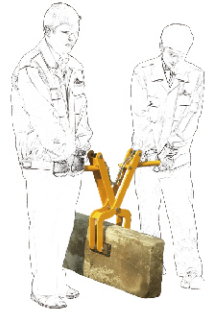
- ♦ MOS Control.
- ♦ Strong Towing Capacity .
- ♦ Comfortable Operation.



Model		QDS30	QDF30	QDF50
Operation		Stand	Seat	Seat
Load capacity	Q (Tonne)	3	3	5
Power unit		Battery	Battery	Battery
Services weight	(kg)	780	780	1100
Tyres, front/rear		Solid rubber	Solid rubber	Solid rubber
Tyre size, front	(mm)	Ø267×76	Ø267×76	Ø330×165
Tyre size, rear	(mm)	Ø330×114	Ø330×114	Ø267×127
Ground clearance, centre of wheelbase	(mm)	85	85	85
Turning radius	(mm)	1350	1430	1580
Drive motor, 60 minute rating	(kw)	2.0	2.5	3.0
Battery voltage/rated capacity (5 h)	(Ah/V)	300/24	300/24	300/36
Travel speed, with/without load	(km/h)	7	6	6
Service brake		Mechanism drum	Mechanism drum	Mechanism drum
Dimension	(mm)	1490×800×1200	1550×800×1200	1760×820×1280

Lifting Clamp LH150

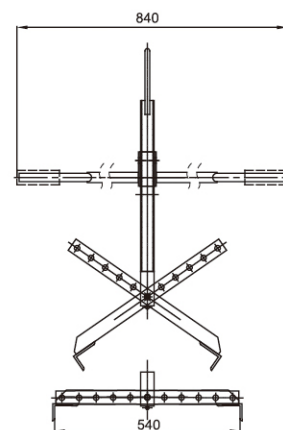
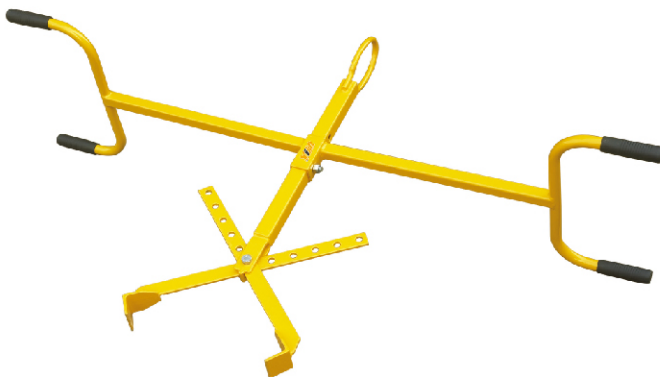
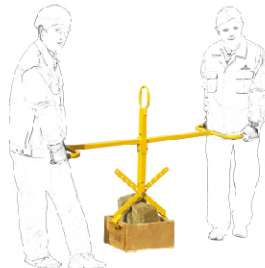
- Convert a forklift truck into a mobile crane to reach and transport long and awkward loads from inaccessible location.
- Verify load centre of forklift truck.
- Safety chain wedge to boom has grab hools for anchoring job boom to forklift truck.
- Zinc plated fork heels pin for safe forklift attachment.
- Supplied complete with one safety swived hook with bow shackle and one rigid hook.



Model	Capacity (kg)	Max. Internal Open Width of Jaws (mm)	Net Weight (kg)
LH150	150	290	13.2

Drum Lifter Clamp LH200

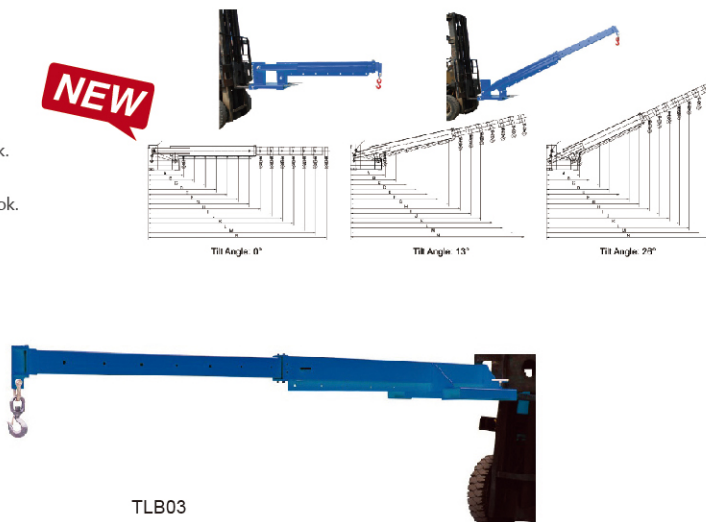
- Designed for drum lifting in horizontal direction.
- 150% overload factory tested.
- Conforms to EC council directive 98/37/EC machinery, American standard ANSI/ASME B30.



Model	Capacity (kg)	For Stringers (mm)	Net Weight (kg)
LH200	200	540/640/740/840/940/1040	11.5

Telescopic Fork Mounted Jibs TLB series

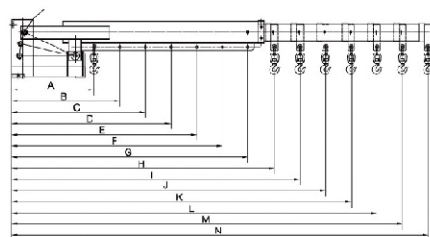
- ♦ Convert a forklift truck into a mobile crane to reach and transport long and awkward loads from inaccessible location.
- ♦ Verify load centre of forklift truck.
- ♦ Safety chain welded to boom has grab hooks for anchoring jib boom to forklift truck.
- ♦ Zinc plated fork heels pin for safe forklift attachment.
- ♦ Supplied complete with one safety swived hook with bow shackle and one rigid hook.



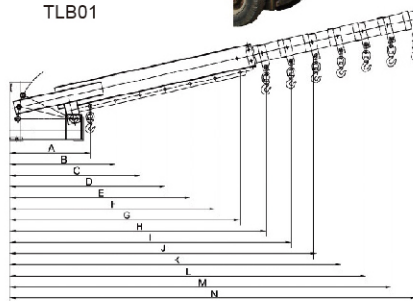
Model	TLB03												
Positions (mm)	A	B	C	D	E	F	G	H	I	J	K	L	M
Capacity (kg)	3000	2300	1865	1570	1355	1865	1065	960	875	805	745	690	640
Fork Opening (mm)	464												
Fork Pockets (mm)	180x60												
Overall Size (mm)	2168x660x324												
Packing Size (mm)	2180x680x444												
Net Weight (kg)	188												



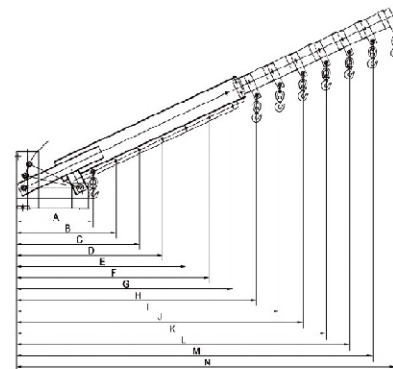
TLB01



Tilt Angle: 0°



Tilt Angle: 13°



Tilt Angle: 26°

Model	TLB01													
Positions (mm)	A	B	C	D	E	F	G	H	I	J	K	L	M	N
0° Capacity (kg)	3000	2291	1853	1556	1341	1178	1050	944	860	790	730	679	635	596
13° Capacity (kg)	3902	2357	1906	1598	1377	1209	1078	969	882	811	749	697	651	611
26° Capacity (kg)	3127	2475	2009	1692	1460	1285	1147	1032	941	865	801	745	696	654
Fork Opening (mm)	346													
Fork Pockets (mm)	180x74													
Overall Size (mm)	2322x542x512													
Packing Size (mm)	2340x560x630													
Net Weight (kg)	240													

Horizontal Telescopic Fork Mounted Jibs TLB02

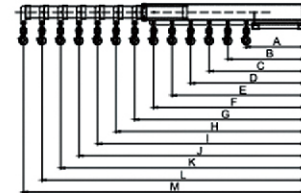
- Convert a forklift truck into a mobile crane to reach and transport long and awkward loads from inaccessible location;
- Verify lead center of forklift truck;
- With two locking screw and safety heavy chains to ensure fork not to shift or slip;
- Applicable fork sectional size $\leq 180 \times 60 \text{mm} (W \times T)$;
- Supplied complete with one safety swivel hook with bow shackle & one rigid hook.



TLB02



TLB02



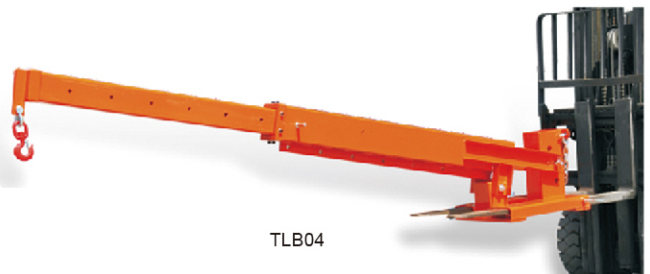
Model TLB02		A	B	C	D	E	F	G	H	I	J	K	L	M
Length Positions	mm	730	960	1180	1420	1650	1880	2115	2345	2575	2805	3035	3265	3495
Capacity	(kg)	3000	2280	1840	1542	1327	1164	1035	933	850	780	721	670	626
Fork Opening	(mm)	284												
Fork Pockets	(mm)	180x60												
Overall Size	(mm)	2150x660x325												
Net Weight	(kg)	188												

Dip-angle Telescopic Fork Mounted Jibs TLB04

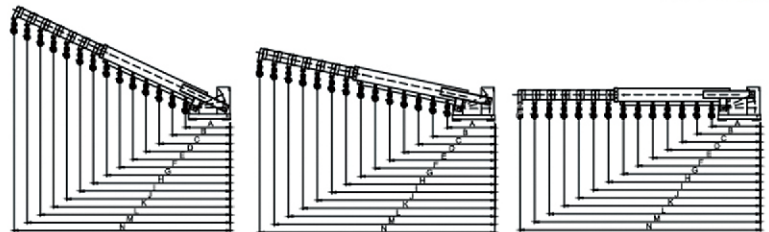
- Convert a forklift truck into a mobile crane to reach and transport long and awkward loads from inaccessible location;
- Adjustable three dip-angle positions--0°, 13° and 26°;
- Verify load center of forklift truck;
- With two locking screw and safety heavy chains to ensure fork not to shift or slip;
- Supplied complete with one safety swivel hook with bow shackle & one rigid hook



TLB04



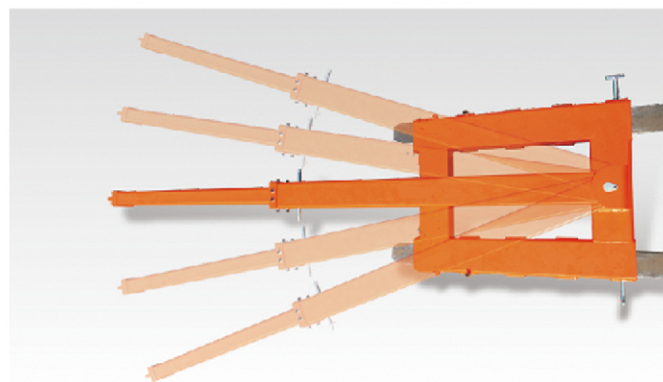
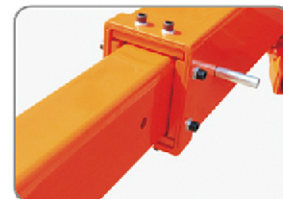
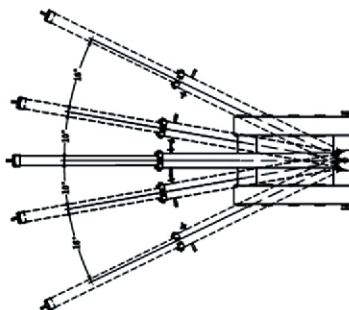
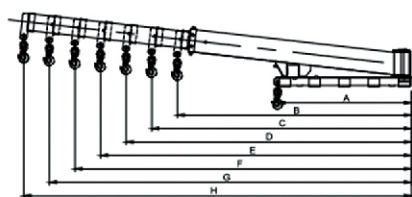
TLB04



Model TLB04			A	B	C	D	E	F	G	H	I	J	K	L	M	N
0°	Length Positions	mm	760	990	1220	1450	1680	1910	2140	2375	2605	2835	3065	3295	3525	3755
	Capacity	kg	3000	2303	1869	1572	1357	1194	1065	960	875	804	744	692	647	607
13°	Length Positions	mm	740	965	1190	1415	1640	1865	2090	2319	2544	2769	2994	3219	3444	3669
	Capacity	kg	3081	2363	1916	1611	1390	1223	1091	983	896	823	762	708	662	621
26°	Length Positions	mm	710	919	1127	1336	1544	1752	1961	2174	2382	2591	2799	3007	3215	3424
	Capacity	kg	3211	2481	2023	1707	1477	1301	1163	1049	957	880	815	758	709	666
Fork opening		mm	166													
Fork pocket		mm	180×74													
Overall size(L×W×H)		mm	2410×540×525													
Net Weight		kq	240													

Dip-angle Telescopic rotatable fork mounted Jibs TLB05

- ♦ The lifting arm can adjust different rotation Angle in 5 different holes. The hook is rotatable with a safety latch.
- ♦ With two locking screw and safety heavy chains to ensure fork not to shift or slip;
- ♦ The adjustable telescopic super long lifting arm is suitable for the area where the forklift is not easy to enter for operation especially suitable for lifting long strip goods in containers with forklift.



TLB05

Model TLB05		A	B	C	D	E	F	G	H
Length Positions	mm	1195	2090	2319	2548	2778	3005	3233	3462
Capacity	kg	2000	1144	1031	938	851	795	739	590
Fork Opening	mm	515							
Fork Pockets	mm	180×65							
Overall Size	mm	2100×910×500							
Net Weight	kg	238							

Trash Hopper ZC150

Model		ZC150
Capacity	(kg)	500
Cubage	(L)	150
Container Size	(mm)	750×600×500
Overall Size	(mm)	1100×780×800
Swivel Wheel	(mm)	Ø125
Front Wheel	(mm)	Ø125×2
Fork Pocket Distance	(mm)	600
Pocket Size	(mm)	150×55
Net Weight	(kg)	103



Self-Dumping Hopper SDH series

- Hopper automatically dumps when bumper release contact the side of the dumpster.
- Hopper returns to an upright and locked position automatically.
- Includes a cable to manually dump the hopper, must be attached to forklift truck when dumping.

NEW



Automatic Release Type



Manual Release Type is available.

Model		SDH25L	SDH38L	SDH25M	SDH35L
Capacity	(kg)	1000	1000	1800	1800
Volume	(m³)	0.25	0.38	0.25	0.38
Overall Dimensions	LxHxW (mm)	1315×965×660	1315×965×840	1315×965×660	1315×965×840
Distance Fork Pocket Centre	(mm)	457	637	457	637
Net Weight	(kg)	110	135	130	155

Forklift Maintenance Platform NK series

- For overhead access and maintenance with safety.
- Spring loaded inward opening door with safety latch for safety entry.
- Unit is secured to the fork with heel pins and chain.
- Slip-resistant floor with drainage holes.
- Conforms to Health and safety Guidance PM28 and GN28 standard.
- Less storage space, portable and easy to assemble.
- Wheel fitted for easy maneuvering.



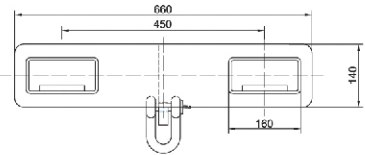
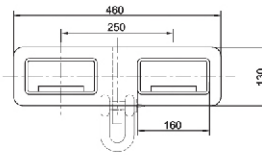
NK30A



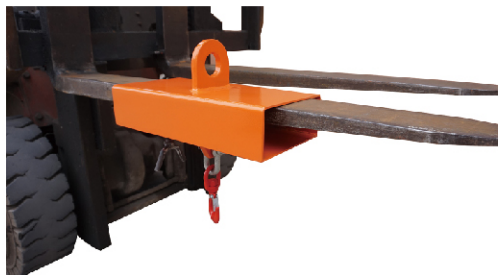
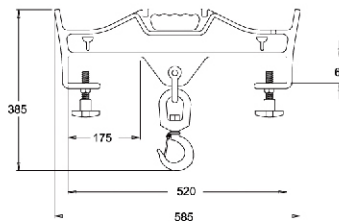
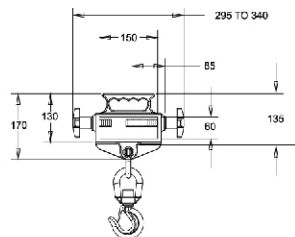
Model		NK30A	NK30B	NK30C	NK30D	NK30E	NK30F
Max.Capacity	kg(lb.)	300(660)					
Deck Size	mm(in.)	950×950(38×38)	1200×1000(48×40)	1000×1000(40×40)	950×950(38×38)	1200×1000(48×40)	1000×1000(40×40)
Max. Height	mm(in.)	2000(80)					
Fork Speed	mm(in.)	500(20)					
Net Weight	kg(lb.)	68(149.6)	85(187)	80(176)	92(202.4)	107(235.4)	102(224.4)

Fork Hook MKR/HH series

- Converts forklift into a mobile crane in seconds
- Adjustable along the length of the fork.
- Secured to forks by thumb screw
- Swivel hook includes safety latch.



Model		MK10R	MK25R	MK50R
Capacity	kg(lb.)	1000(2200)	2500(5500)	5000(11000)
Max. Fork Section	(mm)(in.)	140×55(5.5×2.2)	148×56(5.8×2.2)	188×76(7.4×3)
Overall Size	(mm)(in.)	120×460×130(4.7×18×5)	150×660×140(6×26×5.5)	180×730×220(7.1×28.7×8.7)
Net Weight	kg(lb.)	14(30.8)	25(55)	45(99)



HHSF10 - Single Fork



HHSF20

Model		HHSF10	HHSF20
Capacity	kg(lb.)	1000	2000
Fork Openings	W×D(mm)(lb.)	--	160×65
Max. Fork Width	(mm)(in.)	--	629
Overall Length	(mm)(in.)	400	940
Body Height(excluding Hook)	(mm)(in.)	17	130
Chain Length	(mm)(in.)	--	--
Overall Width	(mm)(in.)	200	645
Overall Height(Excludes Shackle And Hook)	(mm)(in.)	510	260
Net Weight	kg(lb.)	8	45

Fork Caddy FC series

- Transport fork truck forks easily and safely with our new Fork Caddy.
- This caddy also allows the user to easily remove and install forks onto a fork truck.
- The Fork Caddy has easy-grip handles and rolls smoothly on two swivel casters.
- A fork tine lock secures the caddy onto the fork to keep it in place while transporting.
- The comfort-grip handle pivots up to 180° to allow for easier mobility.
- The Fork Caddy is lightweight and small enough for easy storage as well.



Model		FC90
Usable Size	W×H(mm)(in.)	175×70(7×28)
Casters	mm(in.)	Φ63×32(2.5×1.3)
Capacity	kg(lb.)	90(198)
Overall Dimension	mm(in.)	1100×420×950(44×16.5×37.4)
Net Weight	kg(lb.)	13.5(29.7)

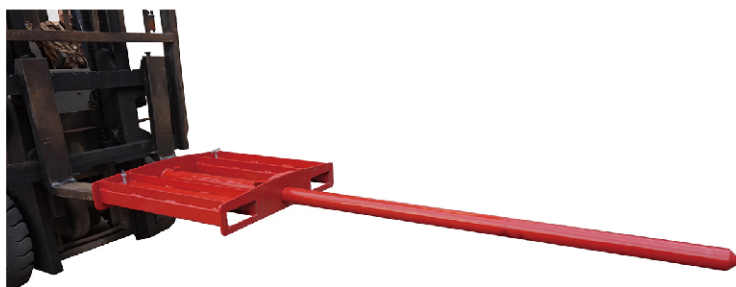
Fork Extensions EX series

- The simple but effective way of lengthening your forks to handle longer loads safely, without damage to the load.
- Heavy duty steel construction, fit onto forks up to 50mm (2") thickness.
- Steel retaining strap prevents forks extensions from sliding off forks during use.
- Sold in pair only.



Model	Length of Extension		Fit Fork Width		Net Weight (Per pair)	
	(inch)	(mm)	(inch)	(mm)	(lbs)	(kg)
EX484	48	1219	4	100	77.5	35
EX604	60	1525	4	100	97	44
EX724	72	1830	4	100	116	53
EX844	84	2134	4	100	136	62
EX964	96	2435	4	100	155	70
EX485	48	1219	5	125	87	39
EX605	60	1525	5	125	108	49
EX725	72	1830	5	125	130	59
EX824	82	2085	4	100	133	60
EX825	82	2085	5	125	148	67
EX845	84	2134	5	125	152	69
EX965	96	2435	5	125	173	79
EX486	48	1219	6	150	94	43
EX606	60	1525	6	150	117.5	53
EX726	72	1830	6	150	141	64
EX846	84	2134	6	150	164.5	75
EX966	96	2435	6	150	188	85

Carpet Ram, Fork Mounted CR series



Model	Pole Length	Pole Diameter	Material	Fork Pocket Size	Load Capacity
CR1-71	71'=1800mm	2-4/3"=70mm	Steel	7-1/2" W × 2-1/2"H on 24" Center	3700lbs=1650kg
CR1-79	79'=2000mm				3300lbs=1500kg
CR1-89	89'=2250mm				3000lbs=1350kg
CR1-108	108.5'=2750				2500lbs=1200kg
CR1-120	120'=3000mm				2200lbs=1000kg

Trailer Stabilizer Jacks TJ series

A "must" for safely loading and unloading trailers !

♦ Meet OSHA Specification with our wide variety of Trailer Stabilizing Jacks OSHA 1910.178(k)(3) states "Fixed jacks may be necessary to support a semi-trailer and prevent upending during the loading or unloading when the trailer is not coupled to a tractor" .

A. Spin-Top Jacks

- ♦ ACME threaded screw design.
- ♦ Reflective collar and safety yellow painting.



Model		TJ40	TJ40A
Service Range	(in.)	39 1/2-51	39 1/2-51
Static Capacity	(lbs/ tonne)	100000/45	100000/45
Lifting Capacity	(lbs/ tonne)	40000/18	50000/22.7
Cap Size		7.5" diameter	7.5" diameter
Base Plate		15" triangular	15" triangular
Wheel Dia.		10" solid rubber	10" solid rubber
Net Weight	(lbs/ kg)	110/50	125/57

B. Trailer stabilizing Jacks

- ♦ Ratchet screw design, reversible.
- ♦ Reflective collar and safety yellow painting.

Model	TJ50	TJ50A	TJ50B	TJ50C	TJ50D
Service Range	(in.) 39 1/2-51	39-51	39-51	45-57	45-57
Static Capacity	(lbs/tonne) 100000/45	100000/45	100000/45	80000/36	100000/45
Lifting Capacity	(lbs/tonne) 40000/18	40000/18	50000/22.7	40000/18	40000/18
Cap Size	8" diameter	7.5" diameter	8" diameter	8" diameter	8" diameter
Base Plate	14" diameter	16" triangular	16" triangular	16" triangular	16" triangular
Wheel Dia.	10" semi-pneumatic	10" solid rubber	10" solid rubber	10" solid rubber	10" solid rubber
Net Weight	(lbs/kg) 125/57	110/50	125/57	115/52	130/59



TJ50

C. Ratchet Beam Jacks TJ series

- Ratchet screw design, reversible.
- Reflective collar and safety yellow painting.



TJ60A

Model	TJ60	TJ60A
Service Range (in.)	39 1/2-51	39 1/2-51
Static Capacity (lbs/ tonne)	100000/45	80000/36
Lifting Capacity (lbs/ tonne)	50000/22.7	40000/18
Cap Size	6"wide × 24"ong	6"wide × 24"ong
Base Plate	15"triangular	16"triangular
Wheel Dia.	8"semi-pneumatic	10"solid rubber
	4"emi-steel	4"emi-steel
Net Weight (lbs/ kg)	195/88.5	180/82

D. Economy Trailer Stabilizing Jack TJ series

- ACME threaded screw design.
- Reflective collar and safety yellow painting.



TJ70



TJ70A

Model	TJ70	J70A
Service Range (in.)	44-51	44-51
Static Capacity (lbs/ tonne)	50000/22.7	50000/22.7
Lifting Capacity (lbs/ tonne)	none	none
Cap Size	5"× 5"square	5"× 5"square
Base Plate	14"diameter	14"diameter
Net Weight (lbs/ kg)	45/20.5	45/20.5

Safety Ratchet Crank T series

To be supplied as an option of steel jacks



Model	Suitable for use with	Arm Length (mm)	Handle Length (mm)
T250	1.5 to 5 tonne steel jacks	250	130
T300	10 to 20 tonne steel jacks	300	250

Steel Jack HVS/HKB series

- ♦ Steel jacks HVS and HKB are developed in accordance with the latest safety regulations. With milled rack, geared wheels and tempered parts of driving gear.
- ♦ In accordance with DIN 7355 (type HVS).
- ♦ Suitable for lifting loads of any type.
- ♦ With lifting body.
- ♦ Safety crank with folding handle.
- ♦ Type HKB comes with low body height.
- ♦ Lifting either with fixed toe or on clawed head.
- ♦ All construction components standardized.
- ♦ Low expenditure of force through optimal ratio.

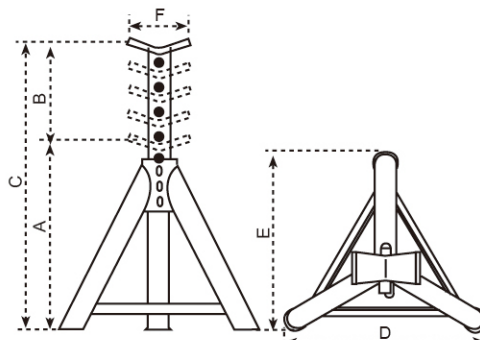


Model	Safe Working Load (kg)	Height of Load (mm)	Lifting Height (mm)	Height of Claw In Lowest Position (mm)	Net Weight (kg)
HVS-1.5	1500	725	350	70	12
HVS-3	3000	725	350	75	20
HVS-5	5000	725	300	70	24
HVS-10	10000	800	300	90	42
HKB-1.5	1500	570	300	70	11
HKB-3	3000	570	300	75	18
HKB-5	5000	600	300	70	22
HKB-10	10000	650	300	80	38

Axle Stand SN series

For all professional applications !

- ♦ Capacity from 1500kg to 16000kg.
- ♦ Heavy duty structure, high stability and long life.
- ♦ According to safety regulations, every vehicle must be supported by stands.



Model		SN15A	SN15B	SN30	SN50	SN80A	SN80B	SN160A	SN160B	SN160C
Capacity	(kg)	1500	1500	3000	5000	8000	8000	16000	16000	16000
Min. Height	A (mm)	260	420	320	375	380	580	295	435	675
Max. Height	B (mm)	140	240	210	200	220	385	140	280	420
Fully Extended	C (mm)	400	660	530	575	600	965	435	715	1095
Pitch	(mm)	38	65	42	50	55	75	70	70	70
Top	F (mm)	70	70	70	70	125	125	130	130	130
Distance of Legs	D (mm)	270	415	335	385	400	596	321	480	705
Distance of Legs	E (mm)	240	355	250	325	350	520	272	420	605
Net Weight	(kg)	2	3.5	4.5	5	5.4	9	13.2	20	30

Forklift Jack HFJ series

- ♦ High capacity and rugged construction.
- ♦ Extra low pick up point and 2-position lift pad for hard-to reach places under low profile lift trucks.
- ♦ Special designed hydraulic pump with German seal kits and overload valve.
- ♦ Removable handle and compact size.
- ♦ Conforms to CE standard and ANSI standard.

Model		HFJ-400	HFJ-700A
Rated Capacity	(kg/lbs)	4000/8800	7000/15400
Min. Lifting Height	(mm)	65/2-1/2"	65/2-1/2"
Max. Lifting Height	(mm)	406/16"	420/16-1/2"
Width	(mm)	203mm/8"	250mm/10"
Net Weight	(kg/lbs)	33/72.6	49/107.80
Gross Weight	(kg/lbs)	35/77	53/116.60



Forklift Jack HFJ-500

- ♦ Uniquely built in two lifting speeds.
Quick lifting and slow lifting which can be automatically switched between with load and without load.
Quick lifting: 20 times pump strokes.
Slow lifting: 60 times pump strokes.
- ♦ Two alternative lifting positions.
Low position: capacity 4000kg.
High position: capacity 5000kg.
- ♦ Built in overload valve and bypass valve.
Guarantees safety and reliable operation.
- ♦ Low profile lifting: 65mm.



HFJ-500

Model		HFJ-500	
Lifting Position		Low position	High position
Lifting Capacity	(T)	4	5
Min. Lifting Height	(mm)	425	724
Max. Lifting Height	(mm)	65	416
Pump Stroke to Max. Height		60	60
Overall Dimensions	LxWxH (mm)	690x210x1190	690x210x1190
Net Weight	(kg)	45	45

Toe Jack TG series

Professional class

- ♦ Super low profile lifting toe
- ♦ Adjustable Lifting toe
- ♦ Heavy duty structure



TG30



TG80

Model		TG30	TG80
Capacity	(tonne)	3	8
Lifting Stroke	(mm)	140	140
Min. Toe Height	(mm)	15	20
Lifting Range	(mm)	15-155	20-160
Net Weight	(kg)	21.5	28

Forklift Support Stand HT series

- HT-6 Capacity 12ton per pair Heavy duty design and wide base.
- HT-7 Capacity 13ton per pair Heat treated heavy-duty holding pins.
- HT-9 Capacity 18ton per pair Provide to support forklifts or heavy machinery.



Shown HFJ-400 forklift jack in use with support stand HT-7



Shown HFJ-700A forklift jack in use with support stand HT-9



HT-9 Stand



HT-7 Stand

Model		HT-6	HT-7	HT-9
Used with Forklift Jack		HFJ-500	HFJ-400A	HFJ-700A
Capacity/Pair	(tonne)	12	14	18
Adjustable Range	(mm)	242-420	242-400	242-415
Net Weight	(kg)	13	13	15

Note: Sold in pairs only

Industrial Toe Jack TL series

Professional class

- Heavy-duty, industrial quality, dual purpose jack.
- Designed for lifting loads with very low minimum clearances (foot) or high clearances (head).
- Ideal for house moving, machinery installation and application at shipyard, bridge building or plant construction sites.
- Great companion tool for machinery type rollers.
- Convenient 2001/2 swivel socket for easy operation in any direction on 5 and 10 ton models.
- Safety valve for overload protection.
- Features spring assisted return and over-travel protection on 5 or 10 ton models.
- Ram is made of heat treated special steel to resist rust and assure strength.
- Not affected by temperature extremes.
- Pump handle included.
- Conforms to ANSI/ASME B30.1 standards.



10 tonne



2 tonne

Specifications

Model		TL-7102	TL-7105	TL-7110
Toe Capacity	(tons)	2	5	10
Head Capacity	(tons)	3	6	14
Toe Height Min.	(in.)	5/8	7/8	1-1/8
Toe Lift		4-7/16	4-3/4	5-3/4
Toe Height Max.	(in.)	5-1/16	5-9/16	6-13/18
Head Height Min.	(in.)	9-3/8	11-3/4	13-1/8
Head Height Max.	(in.)	13-3/4	16-1/8	18-1/8
Toe Size	(LxW/in.)	2x2	2-1/4x3	2-3/8x4
Base Size	(LxW/in.)	5x7	10-5/8x7-1/4	11-1/4x9-1/2
Net Weight	(lbs.)	18	53	84

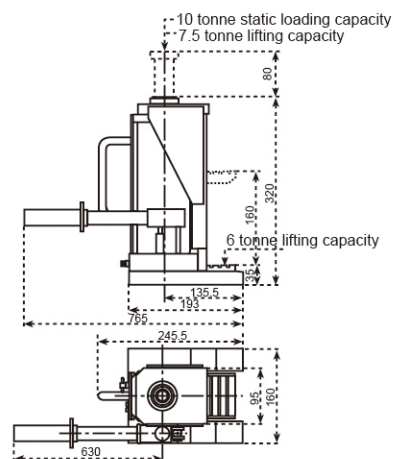
Machinery Jack TB100

Professional class

- Conforms to CE safety standard.



TB100



Static loading capacity on top 10 tonne

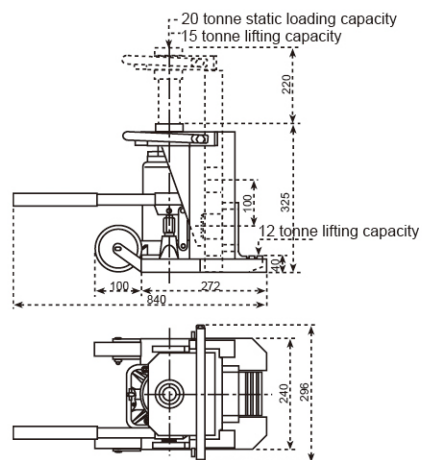
Model	Lifting Capacity		Lifting Stroke	Lifting Range of Top	Min. Loading Height Using Lifting Toe	Lifting Range of toe	Lifting Range of toe	Net Weight
	on top	on toe						
TB100	7.5 tonne	6 tonne	160mm	320-560 mm	35 mm	160 mm	35-195 mm	25 kg

Machinery Jack TB200

Professional class



TB200



Static loading capacity on top 20 tonne

Model	Lifting Capacity		Lifting Stroke	Lifting Range of Top	Min. Loading Height Using Lifting Toe	Lifting Range of toe	Net Weight
	on top	on toe					
TB200	15 tonne	12 tonne	140mm	325-545 mm	40 mm	40-260 mm	69 kg

Hand Pumps TN series

- Lightweight and compact design.
- Two-speed operation to reduce handle strokes.
- Integral 4-way valve on SBZ50S for operation of double-acting cylinders.
- Large oil capacities to power a wide variety of cylinders and tools.
- Internal pressure relief valve for overload protection.

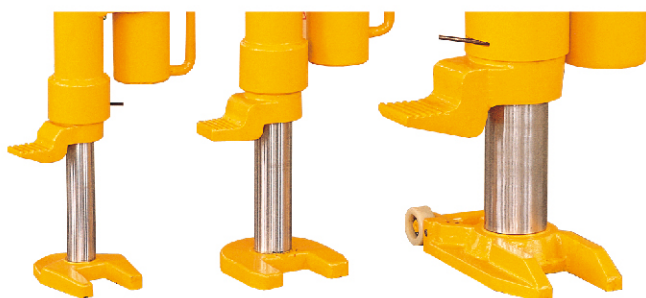
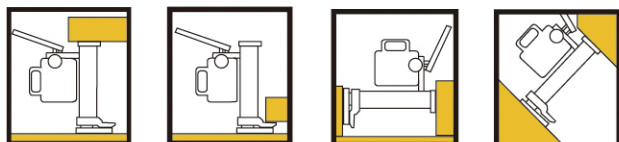


Pump Type		Usable Oil Capacity (cm ³)	Pressure Rating (Mpa)	Stroke (mm)	Cylinder Effective Area (cm ²)	Oil Displacement Per Stroke (cm ³)	Max. Effort (kgf)	Outlet (Spec.)	Net Weight (kg)
TN50	/	820	68.8	20	1.53	3.08	58	3/8NPTF	4
TN50S	Quick speed	820	1.4	20	6.15	12.3	58	3/8NPTF	4
	Low speed	820	68.8	20	1.53	3.08	58	3/8NPTF	4

Hydraulic Jack HM series

Hydraulic jacks for repairs, maintenance and installation of heavy machines

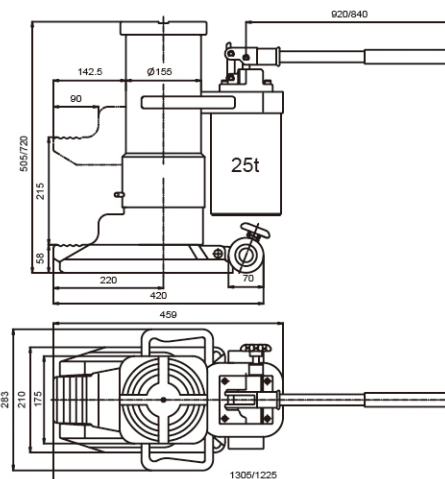
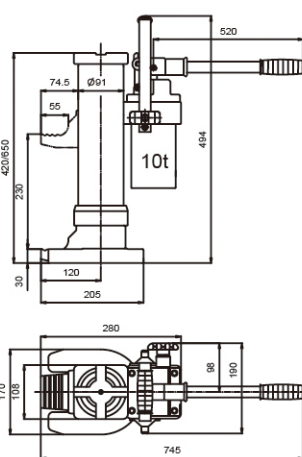
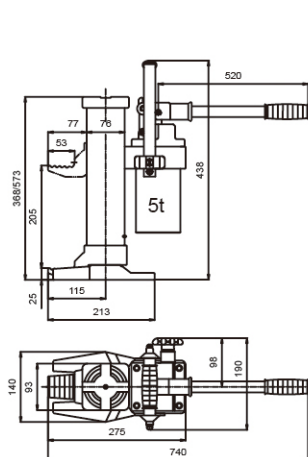
- ♦ Compact and stable construction.
- ♦ Can be used in any position.
- ♦ Housing revolves 360 degrees.
- ♦ Lowering speed can be accurately adjusted.
- ♦ Protected against overloading.
- ♦ Pump lever is removable.
- ♦ According to CE and US standard USA ASME/ANSI B30.1.1986.



CAUTIONS

To avoid possible personal injury or damage to equipment

- Do not exceed the maximum load capacity of the jack.
- Do not add additional load to a lifted load.
- Do not use in unstable or hazardous positions.
- Unit must be used on flat surfaces able to carry the load.
- The load must be stable during lifting.
- An unstable load may cause the jack or load to slip.
- Do not use jack(s) if damaged, altered or in poor condition.
- Do not lift people or loads with people on them.
- Do not lift at the end of the toe. Fully engage the load with the toe.



Model		HM50	HM100	HM250
Capacity	(T)	5	10	25
Lifting Range of Foot	(mm)	25-230	30-260	58-273
Lifting Range of Head	(mm)	368-573	420-650	505-720
Max. Lever Force	(kg)	38	40	40
Net Weight	(kg)	25	35	102

Stabilising Jack JK15

- ♦ This jack will keep a trailer level when disconnected from tractor, or when it is parked on sloping ground.
- ♦ 5 positions height adjustment, 50mm per position.
- ♦ It is very easy to handle the jack by two wheels system.

NEW



Model		JK15
Capacity	(kg)	15000
Min. Lifting Height	(mm)	1070
Max. Lifting Height	(mm)	1270
Adjustable Range	(mm)	200
Wheel, Rubber	(mm)	200x50
Support Length	(mm)	1200
Total Length	(mm)	1750
Total Width	(mm)	590
Net Weight	(kg)	86

Hand Winch WH series

- ♦ Suitable for many lifting and lowering applications such as raising boats on davits or raising and lowering sailboat keels.
- ♦ Self-locking brake winches provide additional safety and control for many lifting and pulling jobs.
- ♦ The automatic friction brake supplies constant, positive holding action and prevents runaway load.
- ♦ Brake is fully automatic and the load remains in position anytime the handle is released.



Without wire rope.



WH08

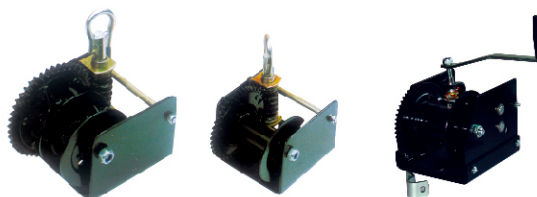


WH12

Model	WH06	WH08	WH10	WH12	WH14	WH16	WH18	WH20	WH25
W.L.L (lbs)	600	800	1000	1200	1400	1600	1800	2000	2500
Cable	4.2mm×10m	4.5mm×10m	4.5mm×10m	4.8mm×10m	4.8mm×10m	5.0mm×10m	5.1mm×10m	5.1mm×10m	5.6mm×10m
Gear Ratio	3:1	3:1	3.4:1	3.4:1	3.4:1	4:1	4.1/8:1	4.1/8:1	4.1/8:1
Net Weight (kg)	17	17	19	19	22	17	20	21	23

Worm Gear WHC series

- ♦ Worm gear winch is built for multi-purpose hauling and pulling operations that require a positive mechanism for breaking that cannot accidentally run free.
- ♦ It is not recommended for lifting applications.
- ♦ It is not to be used as hoists for lifting, supporting, or transporting people or for loads over areas where people could be present.

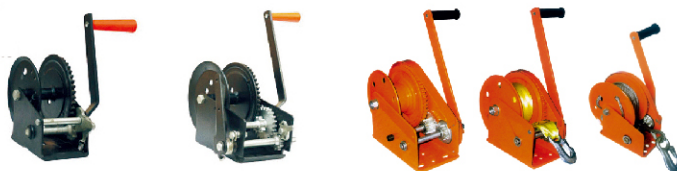
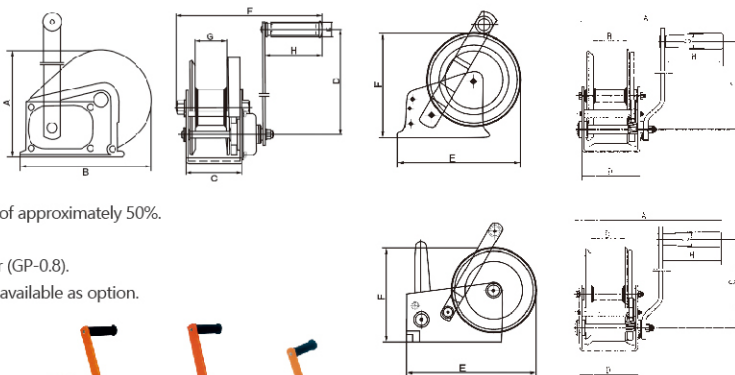


Model	Rated Pull lbs (kg)	Cable Size		Gear Ratio	Module (mm)	Handle Length (mm)	Drum-Hub Dia. (mm)
		Diameter (mm)	Length (m)				
WHC15	2500(680)	Ø4.8	15	31:1	3	280	Ø38
WHC20	2000(900)	Ø5.0	15	41:1	3	280	Ø38
WHC25	2500(1100)	Ø5.6	30	51:1	3	280	Ø50
WHC30	3000(1362)	Ø8.0	18	51:1	3	285	Ø80

Grip Puller GP series

The Hu-Lift grip puller is operable in the vertical, horizontal and diagonal planes, with a safe working load of 800, 1600 or 3200kg.

- ♦ Accurate operation. ♦ Virtually maintenance-free.
- ♦ Body made of high-strength cast aluminium with low own weight.
- ♦ Shearing pin breaks at 25% overload and operating lever bends at an overload of approximately 50%.
- ♦ Shearing pin can be replaced under full load.
- ♦ Spare shearing pins are located in the transport handle or in the operating lever (GP-0.8).
- ♦ Wire rope set; the standard wire rope length is 20 metres, 30, 40, 50 metres are available as option.
- ♦ Conforms to CE safety standard.



Model	WHA60	WHA80	WHA100	WHA120	WHA140	WHA200	WHA250	WHB120	WHB180	WHB260
Capacity (kg/lb)	272.4/600	363.2/800	454/1000	545/1200	635/1400	908/2000	1135/2500	544.8/1200	817.2/1800	1180.4/2600
Gear Ratio	2.9:1	3.7:1	4.2:1	4.2:1	4.2:1	10.35:1/4.5:1	11.5:1/5:1	4.2:1	5:1	10:1
Net Weight (kg)	2.5	2.6	2.8	2.8	2.8	6.2	6.5	3.7	7.7	10.1
No of Speed	Single	Single	Single	Single	Single	Double	Double	—	—	—
Dimension	A	232	232	232	232	310	310	156	203	216
	B	51	51	51	51	65	65	184	256	293
	C	180	180	180	180	251	251	88	107	127
	D	88	88	88	88	129.5	129.5	210	319	319
	E	165	165	184	184	243	259	27	27	27
	F	138	138	156	156	178	190	272	283	305
	G	25	25	25	25	25	25	51	60	63
	H	90	90	90	90	90	90	109	109	109

Foldable Shop Crane SC•A series

- ♦ Unique technology of quick lifting by double action pump.
- ♦ Larger capacity than normal shop cranes at 3 position.
- ♦ Chrome plated lifting piston and pump piston.
- ♦ Relief valve to prevent overload.
- ♦ 360° swivel operating handle.
- ♦ Forged heavy duty swivel hook.
- ♦ 125% overload testing before delivery.
- ♦ Conforms to CE safety standard.



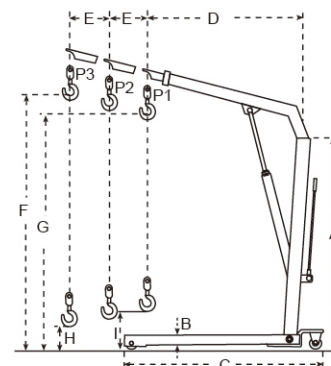
SC1000A
Shop crane folded



SC1000A



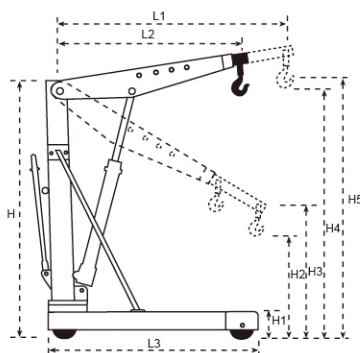
New deadmen
lowering system !



Model	Capacity at Position (kg)			Dimensions (mm)									Overall Width (mm)	Net Weight (kg)
	P1	P2	P3	A	B	C	D	E	F	G	H	I		
SC500A	500	425	350	1410	165	1510	895	102	2120	1960	150	340	970	75
SC1000A	1000	800	700	1675	90	1630	1230	150	2445	2330	—	245	1120	115
SC2000A	2000	1700	1500	1690	205	1900	1290	150	2705	2505	—	230	1165	165

Euro Shop Crane SA series

- ♦ Heavy duty design.
- ♦ Suitable for European pallet.
- ♦ Chrome plated lifting piston.
- ♦ Conforms to CE safety standard.



Dimensions		L1	L2	L3	H1	H2	H3	H4	H5	H	B1	B2	B3
SA500	(mm)	1360	1060	1395	155	470	705	2225	2475	1595	925	840	1000
SA1000	(mm)	1360	1060	1395	155	470	705	2225	2475	1595	925	840	1000

Dimensions		Capacity	P1	P2	P3	P4	Net Weight
SA500	(kg)	500	500	450	400	350	81
SA1000	(kg)	1000	1000	900	800	700	103

Economic shop Crane ZD series



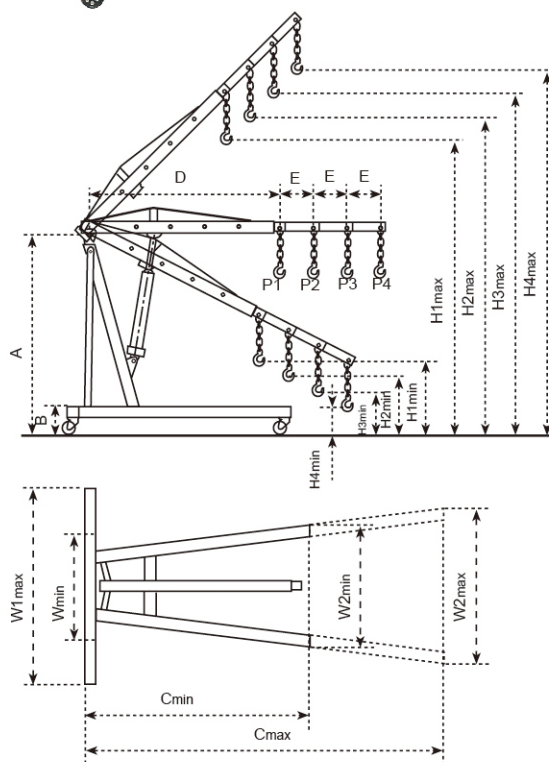
Model		ZD1001	ZD1002	ZD1003
Capacity	(kg)	1000	2000	3000
Max. Lifting Range	(mm)	2000	2000	2100
Net Weight	(kg)	80	92	120

Shop Crane SB series

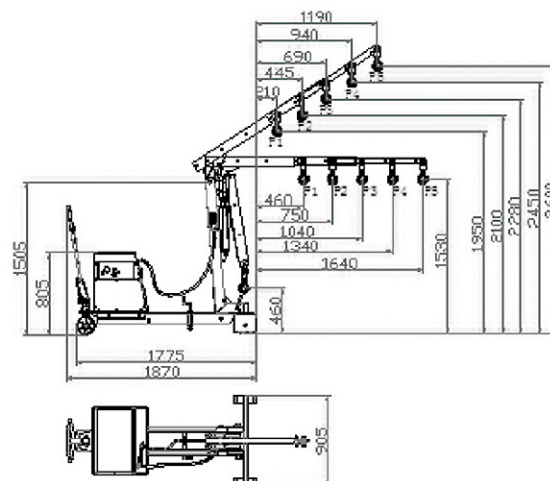
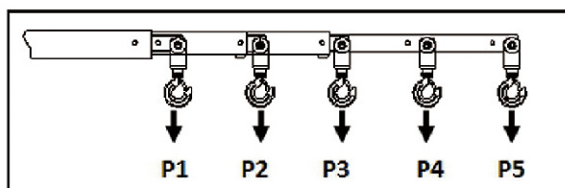
- Four hook position.
- Smooth, quite operation.
- Hard chrome rams and pump piston.
- Full swivel hook with safety clip fitted as standard.
- Controlled lowering with positive stop.
- Overload valve.
- Top of stroke by-pass prevents hydraulics locking at full height if over pumped.
- Jacks from folded to upright position.



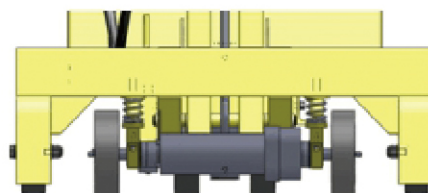
Model		SB500	SB1000	SB2000	SD2000
Fodable		Yes	Yes	Yes	No
Capacity	(kg)	500	1000	2000	2000
Capacity at	P1	500	1000	2000	2000
Position	P2	400	750	1500	1500
(kg)	P3	250	500	1000	1000
	P4	150	250	500	500
Net Weight	(kg)	75	96	95	113
Dimensions	A	1403	1650	1403	1350
(mm)	B	200	170	200	185
	Cmin	1710	1680	1710	1620
	Cmax	—	—	—	2320
	D	900	1160	900	1270
	E	180	95	180	225
	W1min	810	500	810	945
	W1max	—	—	—	1340
	W2min	1015	1070	1015	800
	W2max	—	—	—	960
	H1min	345	550	345	185
	H1max	1820	1785	1820	1945
	H2min	—	255	—	285
	H2max	1960	1805	1960	2100
	H3min	—	180	—	385
	H3max	2100	1825	2100	2260
	H4min	—	180	—	485
	H4max	2240	1845	2240	2410



Counter Balance Crane SD/DSD/DSDZ series



SD550



DSD550

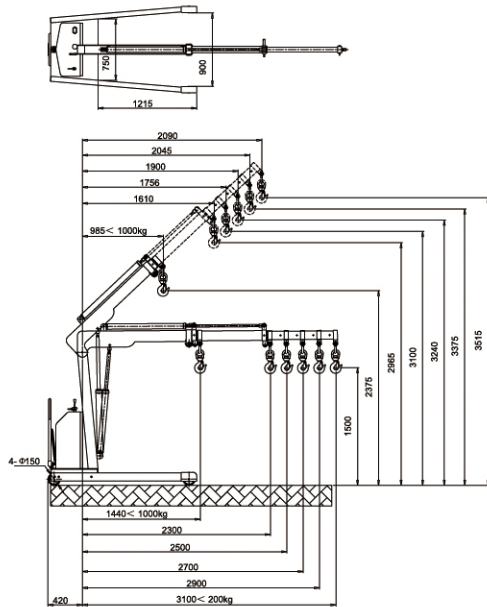


DSDZ550

Model		SD550	DSD550	DSDZ550
Capacity	P1 (kg)	550	550	550
	P2 (kg)	400	400	400
	P3 (kg)	300	300	300
	P4 (kg)	220	220	220
	P5 (kg)	150	150	150
Lowered Speed	(mm/s)	Adjustable	≤76	≤76
Motor Power/Voltage	(Kw/V)	-	0.8Kw/12V	0.8Kw/24V
Battery	(Ah)	-	60	60
Travel Speed	(km/h)	-	-	2.0

Semi-electric Single Shop Crane YLD series

- Instead of a forklift to become a small mobile crane;
- Wide range of lifting angles, adjustable telescopic long arm;
- Suitable for areas where the forklift can't enter to operate, foldable legs, small package volume, convenient for transportation.

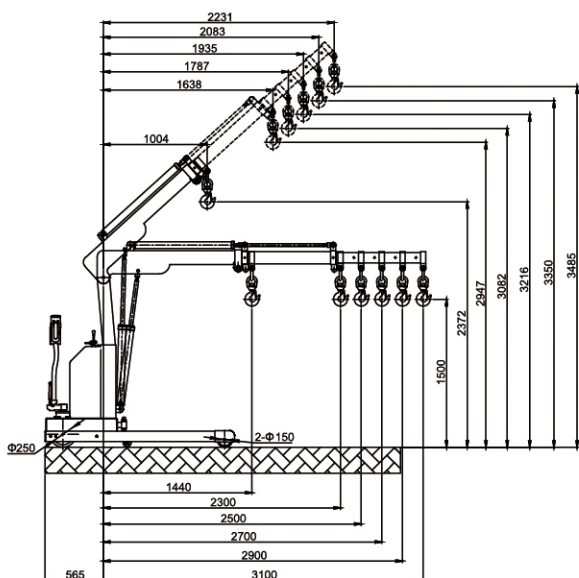
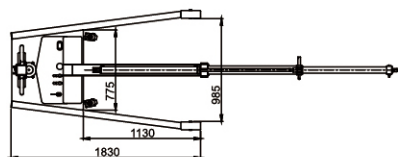


Note: The load attenuation curve must be considered during using to ensure safety.

Model		YLD01
Front wheel size	kg	Φ150×50
Auxiliary wheel size	mm	Φ75×30
Net Weight	kg	466



Electric Single Shop Crane YLE series



Model YLE01			A	B	C	D	E	F
0°	Extention Arm	mm	1440	2300	2500	2700	2900	3100
	Rated Capacity	kg	1000	342	290	250	220	200
40°	Extention Arm	mm	1004	1638	1787	1935	2083	2231
	Rated Capacity	kg	1100	565	430	345	290	250
Inner Width of Leg			985					
Outside Width of Leg			1170					
Net Weight			568					
Front Wheel			Φ150×50					
Supporting Wheel			Φ75×30					
Driving Wheel			Φ250×80					

Crane Fork CC-A series

- ♦ No slings or chains necessary.
- ♦ Crane operator will not need to leave cab of lorry or crane.
- ♦ Forks will remain horizontal when loaded and unloaded.



Model		CC10A	CC15A	CC20A
Work Load Limit WLL	kg	1000	1500	2000
Adjustable Fork total width A	mm	320-1500	320-1500	320-1500
Fork Length B	mm	1000	1000	1000
Hook height C+D	mm	1650-2095	1650-2095	1800-2270
Fork Cross	mm	100×30	100×35	120×40
Net Weight	kg	75	115	145

Crane Fork CC series

- ♦ No slings or chains necessary.
- ♦ Crane operator will not need to leave cab of lorry or crane.
- ♦ Forks will remain horizontal when loaded and unloaded.



Model		CC10	CC15	CC20
Work Load Limit WLL	kg	1000	1500	2000
Adjustable Fork total width A	mm	320-1500	320-1500	320-1500
Fork Length B	mm	1000	1000	1000
Hook height C+D	mm	1650-2095	1650-2095	1800-2270
Fork Cross	mm	100×30	100×35	120×40
Net Weight	kg	146	149	170

Crane Fork NY2000

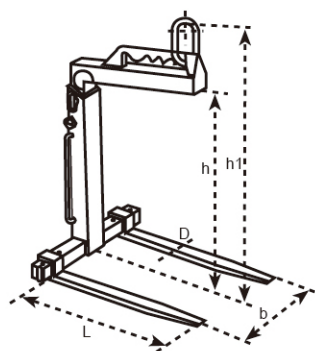
- No slings or chains necessary.
- Crane operator will not need to leave cab of lorry or crane.
- Forks will remain horizontal when loaded and unloaded.
- Easily operate by one person with safety.
- Adjustable fork width with five positions.
- Three position for adjustable height.



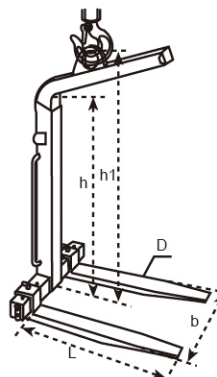
Model		NY2000
Work Load Limit	WLL (T)	2
Adjustable Fork Width	(mm)	370-800
Effective Height	(mm)	1290/1590/1890
Fork Length	(mm)	980
Net weight	(kg)	180

Crane Fork CK/CY series

- No slings or chains necessary.
- Crane operator will not need to leave cab of lorry or crane.
- Forks will remain horizontal when loaded and unloaded.
- Adjustable fork width.
- Adjustable height.



CK Series
Manual balancing



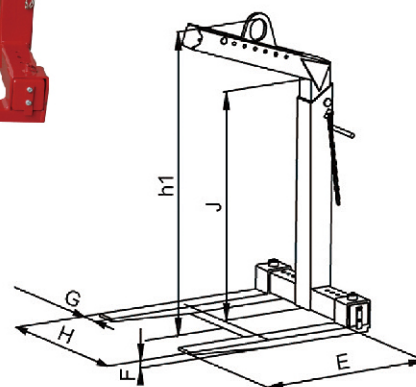
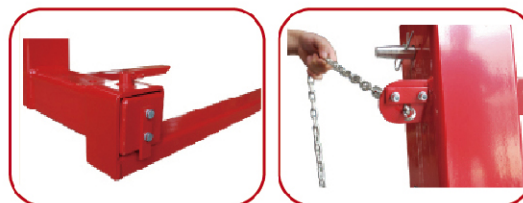
CY Series
Self-balancing head

Model	Work Load Limit WLL (tonne)	Adjustable Fork Width b (mm)	Hook Height h1 (mm)	Effective Height h (mm)	Fork Length L (mm)	Fork Cross D (mm)	Overall Size LxWxH (mm)	Net Weight (kg)
CK10	1	350-900	1390-1890	1100-1600	1000	100x30	1120x920x1390	130
CK20	2	400-900	1640-2340	1300-2000	1000	120x40	1140x920x1640	200
CK30	3	450-900	1670-2370	1300-2000	1000	120x50	1140x920x1670	250
CK50	5	530-1000	1700-2400	1300-2000	1000	150x60	1160x1020x1700	370
CY10	1	350-900	1420-1920	1100-1600	1000	100x30	1120x920x1530	140
CY20	2	400-900	1655-2355	1300-2000	1000	120x40	1140x920x1775	220
CY30	3	450-900	1720-2420	1300-2000	1000	120x50	1140x920x1850	280
CY50	5	530-1000	1710-2410	1300-2000	1000	150x60	1160x1020x1850	380

Pallet Lifter-Adjustable PL-A series

NEW

- ◆ Once the bail pin is set the pallet lifter remains balanced whether full or empty to make the job faster and safer.
- ◆ Adjustable bail provides for balanced handling of items with different load centers.
- ◆ Adjustable throat allows for the correct handling of higher stacked loads.
- ◆ Adjustable forks allow for proper placement of the forks spread.
- ◆ The auto return bail automatically levels empty pallet lifter saving time and effort.
- ◆ Heavy duty construction for years of trouble free service.
- ◆ Complies with ASME standards.

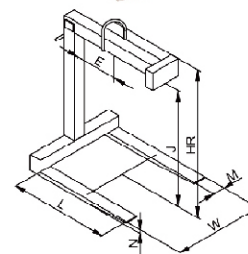


Model		PL-A202
Work Load Limit	WLL (T)	2
Adjustable Fork Width	H (mm)	445-915
Hook Height	h1 (mm)	1448-2190
Effective Height	J (mm)	1035-1632
Fork Length	E (mm)	1092
Fork Cross	GxF (mm)	100x50
Overall Size	LxWxH (mm)	1232x950x1632
Net weight	(kg)	168

Pallet Lifter PL-F series

NEW

- ◆ Converts overhead crane to lift truck.
- ◆ Counter balanced to hang level when empty.
- ◆ Maintenance easy.
- ◆ Allows for ease of loading/unloading in not easily accessible areas.
- ◆ Complies with ASME standards.



Model		PL-F101	PL-F102	PL-F103	PL-F201	PL-F202	PL-F203	PL-F301	PL-F302	PL-F303
Work Load Limit	WLL (T)	1	1	1	2	2	2	3	3	3
Fork Width	W (mm)	635	635	635	635	635	635	635	685.8	762
Hook Height	HR (mm)	1460	1460	1486	1511	1511	1511	1562	1562	1562
Effective Height	J (mm)	1219	1219	1219	1219	1219	1219	1219	1219	1219
Fork Length	L (mm)	914.4	1066.8	1219	914.4	1066.8	1219	1066.8	1219	1371.6
Fork Cross	MxN (mm)	50x50	50x50	50x50	75x50	100x50	100x50	115x50	115x50	115x50
Overall Size	LxWxH (mm)	1014x635x1535	1167x635x1535	1319x635x1560	1359x635x1585	1359x635x1585	1359x635x1585	1247x635x1664	1399x686x1664	1552x762x1664
Net weight	(kg)	122	136	138	230	237	250	357	360	390

Pallet Lifter PL-W series

- Dual lift points eliminates need for counterweight.
- Extremely lightweight for ease of handling.
- Complies with ASME standards.

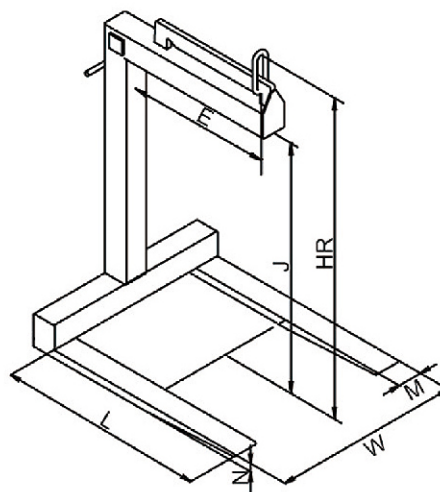
NEW

PL-W series

- Wheels allow for movement of unit without crane.

PL-WL series

- Maintenance free- no moving parts.



PL-W



PL-WL



Model		PL-W101	PL-W201	PL-WL101	PL-WL201	PL-WL301
Work Load Limit	WLL (T)	1	2	1	2	3
Fork Width	W (mm)	635	635	635	635	685.8
Hook Height	HR (mm)	1524	1575	1473	1575	1651
Effective Height	J (mm)	1219	1219	1219	1219	1219
Fork Length	L (mm)	914	914	914	914	914
Fork Cross	MxN (mm)	50x50	100x50	50x50	100x50	115x65
Overall Size	LxWxH (mm)	1014x700x1539	1054x700x1645	1014x635x1539	1054x635x1645	2008x635x1740

Long Chassis Service Jacks HF series

Professional class

- ♦ Welded base and cylinder to assure strength and eliminated leaks.
- ♦ Chromed pump piston and ram for added rust resistance.
- ♦ Foot pedal brings saddle up to load quickly.
- ♦ Meets ANSI/ASME PALD standard & CE/GS standard.



Model		HF20C	HF30C	HF50C	HF50H	HF100C	HF100H
Capacity	(tonne)	2	3	5	5	10	10
Max. Saddle Height	(mm)	800	600	560	685	560	685
Min. Saddle Height	(mm)	140	130	150	150	160	160
Net Weight	(kg)	58	70	95	95	145	145

Air/Hydraulic Service Jacks HF series

Professional class

Latest air/hydraulic technology.

Model		HF50E	HF100E
Capacity	(tonne)	5	10
Max. Saddle Height	(mm)	560	560
Min. Saddle Height	(mm)	150	160
Air Pressure	(Mpa)	0.7-1.0	0.7-1.0
Net Weight	(kg)	100	148



Air Service Jack HF series

Professional class

- ♦ Welded base and cylinder to assure strength and eliminated leaks.
- ♦ Chromed pump piston and ram for added rust resistance.
- ♦ Foot pedal brings saddle up to load quickly.
- ♦ Meets ANSI/ASME PALD standard & CE/GS standard.

Model		HF220DA	HF220DB
Capacity	(tonne)	22	22
Max. Saddle Height	(mm)	525	465
Min. Saddle Height	(mm)	210	185
Air Pressure	(Mpa)	0.7-1.0	0.7-1.0
Net Weight	(kg)	46	46





Yi-lift Material Handling Equipment Co.,Ltd.

📍 Add: NO. 396 Changhong Road, Wujing District, Changzhou, P.R. China.

☎ Tel: 0086-510-68937216, 82305022, 66030831, 68937214

☎ Fax: 0086-510-82730160

✉ E-mail: sales@yi-lift.com

🌐 Http: //www.yi-lift.com www.yiliftmhe.com

